

ABHD8 Antibody (C-term)

Affinity Purified Rabbit Polyclonal Antibody (Pab)

Catalog # AP11013b

Product Information

Application	WB, E
Primary Accession	Q96I13
Other Accession	Q4R584 , NP_078803.4
Reactivity	Human
Predicted	Monkey
Host	Rabbit
Clonality	Polyclonal
Isotype	Rabbit IgG
Clone Names	RB25761
Calculated MW	47331
Antigen Region	410-439

Additional Information

Gene ID	79575
Other Names	Abhydrolase domain-containing protein 8, 3---, ABHD8
Target/Specificity	This ABHD8 antibody is generated from rabbits immunized with a KLH conjugated synthetic peptide between 410-439 amino acids from the C-terminal region of human ABHD8.
Dilution	WB~~1:1000 E~~Use at an assay dependent concentration.
Format	Purified polyclonal antibody supplied in PBS with 0.09% (W/V) sodium azide. This antibody is purified through a protein A column, followed by peptide affinity purification.
Storage	Maintain refrigerated at 2-8°C for up to 2 weeks. For long term storage store at -20°C in small aliquots to prevent freeze-thaw cycles.
Precautions	ABHD8 Antibody (C-term) is for research use only and not for use in diagnostic or therapeutic procedures.

Protein Information

Name	ABHD8 (HGNC:23759)
Function	Negatively regulates NLRP3-driven inflammation (PubMed: 39225180). Promotes NLRP3 degradation through the chaperone- mediated autophagy (CMA) pathway, hence attenuating inflammasome activation and IL1B

secretion. Acts by recruiting palmitoyltransferase ZDHHC12 to NLRP3, facilitating NLRP3 palmitoylation and subsequent degradation (PubMed:[39225180](#)).

Cellular Location

Cytoplasm.

Background

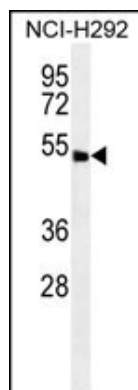
This gene is upstream of, and in a head-to-head orientation with the gene for the mitochondrial ribosomal protein L34. The predicted protein contains alpha/beta hydrolase fold and secretory lipase domains.

References

Kimura, K., et al. Genome Res. 16(1):55-65(2006)

Gerhard, D.S., et al. Genome Res. 14 (10B), 2121-2127 (2004) :

Images



ABHD8 Antibody (C-term) (Cat. #AP11013b) western blot analysis in NCI-H292 cell line lysates (35ug/lane). This demonstrates the ABHD8 antibody detected the ABHD8 protein (arrow).

Please note: All products are 'FOR RESEARCH USE ONLY. NOT FOR USE IN DIAGNOSTIC OR THERAPEUTIC PROCEDURES'.