

ZCCHC17 Antibody (Center)

Affinity Purified Rabbit Polyclonal Antibody (Pab)

Catalog # AP11017C

Product Information

Application	WB, FC, E
Primary Accession	Q9NP64
Other Accession	NP_057589.2
Reactivity	Human, Mouse
Host	Rabbit
Clonality	Polyclonal
Isotype	Rabbit IgG
Clone Names	RB27537
Calculated MW	27570
Antigen Region	159-187

Additional Information

Gene ID	51538
Other Names	Nucleolar protein of 40 kDa, pNO40, Pnn-interacting nucleolar protein, Putative S1 RNA-binding domain protein, PS1D protein, Zinc finger CCHC domain-containing protein 17, ZCCHC17, PS1D
Target/Specificity	This ZCCHC17 antibody is generated from rabbits immunized with a KLH conjugated synthetic peptide between 159-187 amino acids from the Central region of human ZCCHC17.
Dilution	WB~~1:1000 FC~~1:10~50 E~~Use at an assay dependent concentration.
Format	Purified polyclonal antibody supplied in PBS with 0.09% (W/V) sodium azide. This antibody is purified through a protein A column, followed by peptide affinity purification.
Storage	Maintain refrigerated at 2-8°C for up to 2 weeks. For long term storage store at -20°C in small aliquots to prevent freeze-thaw cycles.
Precautions	ZCCHC17 Antibody (Center) is for research use only and not for use in diagnostic or therapeutic procedures.

Protein Information

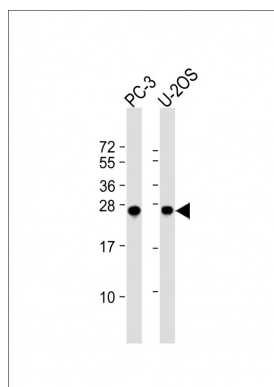
Name	ZCCHC17
Synonyms	PS1D

References

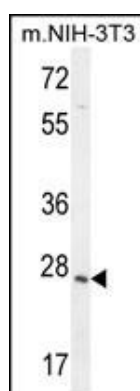
Chang, W.L., et al. Biochem. Biophys. Res. Commun. 307(3):569-577(2003)

Gueydan, C., et al. J. Biol. Chem. 277(47):45034-45040(2002)

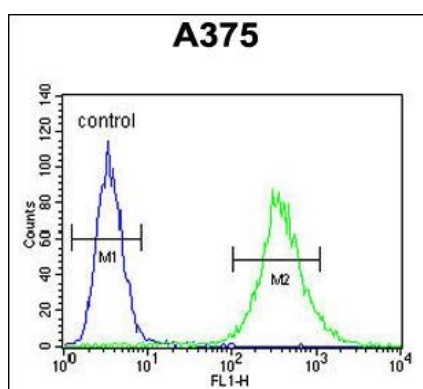
Images



All lanes : Anti-ZCCHC17 Antibody (Center) at 1:1000 dilution Lane 1: PC-3 whole cell lysate Lane 2: U-2OS whole cell lysate Lysates/proteins at 20 µg per lane. Secondary Goat Anti-Rabbit IgG, (H+L), Peroxidase conjugated at 1/10000 dilution. Predicted band size : 28 kDa Blocking/Dilution buffer: 5% NFDM/TBST.



ZCCHC17 Antibody (Center) (Cat. #AP11017c) western blot analysis in mouse NIH-3T3 cell line lysates (35ug/lane). This demonstrates the ZCCHC17 antibody detected the ZCCHC17 protein (arrow).



ZCCHC17 Antibody (Center) (Cat. #AP11017c) flow cytometric analysis of A375 cells (right histogram) compared to a negative control cell (left histogram). FITC-conjugated goat-anti-rabbit secondary antibodies were used for the analysis.

Please note: All products are 'FOR RESEARCH USE ONLY. NOT FOR USE IN DIAGNOSTIC OR THERAPEUTIC PROCEDURES'.