

C17orf59 Antibody (Center)

Affinity Purified Rabbit Polyclonal Antibody (Pab)

Catalog # AP11018c

Product Information

Application	WB, E
Primary Accession	Q96GS4
Other Accession	Q66H43 , Q9D6W8 , Q3SX20 , NP_060092.2
Reactivity	Human, Mouse
Predicted	Bovine, Rat
Host	Rabbit
Clonality	Polyclonal
Isotype	Rabbit IgG
Clone Names	RB27797
Calculated MW	37226
Antigen Region	186-215

Additional Information

Gene ID	54785
Other Names	Uncharacterized protein C17orf59, C17orf59
Target/Specificity	This C17orf59 antibody is generated from rabbits immunized with a KLH conjugated synthetic peptide between 186-215 amino acids of human C17orf59.
Dilution	WB~~1:1000 E~~Use at an assay dependent concentration.
Format	Purified polyclonal antibody supplied in PBS with 0.09% (W/V) sodium azide. This antibody is purified through a protein A column, followed by peptide affinity purification.
Storage	Maintain refrigerated at 2-8°C for up to 2 weeks. For long term storage store at -20°C in small aliquots to prevent freeze-thaw cycles.
Precautions	C17orf59 Antibody (Center) is for research use only and not for use in diagnostic or therapeutic procedures.

Protein Information

Name	BORCS6 (HGNC:25939)
Function	As part of the BORC complex may play a role in lysosomes movement and localization at the cell periphery. Associated with the cytosolic face of lysosomes, the BORC complex may recruit ARL8B and couple lysosomes to

microtubule plus-end-directed kinesin motor.

Cellular Location

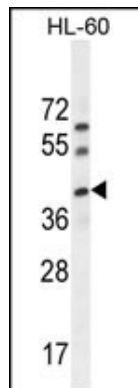
Lysosome membrane.

References

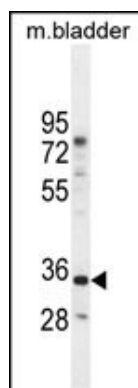
Kimura, K., et al. Genome Res. 16(1):55-65(2006)

Suzuki, Y., et al. Gene 200 (1-2), 149-156 (1997) :

Images



C17orf59 Antibody (Center) (Cat. #AP11018c) western blot analysis in HL-60 cell line lysates (35ug/lane). This demonstrates the C17orf59 antibody detected the C17orf59 protein (arrow).



C17orf59 Antibody (Center) (Cat. #AP11018c) western blot analysis in mouse bladder tissue lysates (35ug/lane). This demonstrates the C17orf59 antibody detected the C17orf59 protein (arrow).

Please note: All products are 'FOR RESEARCH USE ONLY. NOT FOR USE IN DIAGNOSTIC OR THERAPEUTIC PROCEDURES'.