

RILPL2 Antibody (Center)

Affinity Purified Rabbit Polyclonal Antibody (Pab)

Catalog # AP11028c

Product Information

Application	WB, IHC-P, E
Primary Accession	Q969X0
Other Accession	Q6IP02 , Q6AYA0 , A4IFK7 , NP_659495.1
Reactivity	Human, Hamster
Predicted	Bovine, Rat, Xenopus
Host	Rabbit
Clonality	Polyclonal
Isotype	Rabbit IgG
Clone Names	RB28173
Calculated MW	23986
Antigen Region	120-149

Additional Information

Gene ID	196383
Other Names	RILP-like protein 2, Rab-interacting lysosomal protein-like 2, p40phox-binding protein, RILPL2, RLP2
Target/Specificity	This RILPL2 antibody is generated from rabbits immunized with a KLH conjugated synthetic peptide between 120-149 amino acids from the Central region of human RILPL2.
Dilution	WB~~1:1000 IHC-P~~1:100~500 E~~Use at an assay dependent concentration.
Format	Purified polyclonal antibody supplied in PBS with 0.09% (W/V) sodium azide. This antibody is purified through a protein A column, followed by peptide affinity purification.
Storage	Maintain refrigerated at 2-8°C for up to 2 weeks. For long term storage store at -20°C in small aliquots to prevent freeze-thaw cycles.
Precautions	RILPL2 Antibody (Center) is for research use only and not for use in diagnostic or therapeutic procedures.

Protein Information

Name	RILPL2
Synonyms	RLP2

Function	Involved in cell shape and neuronal morphogenesis, positively regulating the establishment and maintenance of dendritic spines (By similarity). Plays a role in cellular protein transport, including protein transport away from primary cilia (By similarity). May function via activation of RAC1 and PAK1 (By similarity).
Cellular Location	Cytoplasm, cytosol. Cytoplasm, cytoskeleton, microtubule organizing center, centrosome. Cell projection, cilium
Tissue Location	Widely expressed. Expressed at higher level in lung.

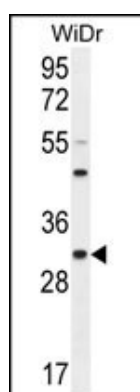
Background

Does not regulate lysosomal morphology and distribution.

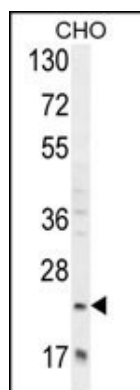
References

Wang, T., et al. Mol. Biol. Cell 15(2):815-826(2004)

Images

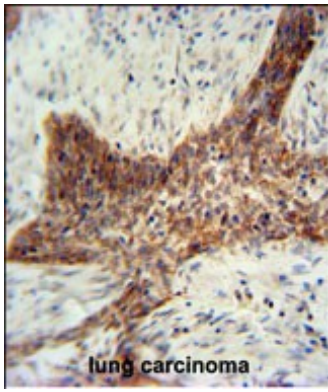


RILPL2 Antibody (Center) (Cat. #AP11028c) western blot analysis in WiDr cell line lysates (35ug/lane). This demonstrates the RILPL2 antibody detected the RILPL2 protein (arrow).



RILPL2 Antibody (Center) (Cat. #AP11028c) western blot analysis in CHO cell line lysates (35ug/lane). This demonstrates the RILPL2 antibody detected the RILPL2 protein (arrow).

RILPL2 antibody (Center) (Cat. #AP11028c) immunohistochemistry analysis in formalin fixed and paraffin embedded human lung carcinoma followed by peroxidase conjugation of the secondary antibody and DAB staining. This data demonstrates the use of the RILPL2 antibody (Center) for immunohistochemistry. Clinical relevance has not been evaluated.



Please note: All products are 'FOR RESEARCH USE ONLY. NOT FOR USE IN DIAGNOSTIC OR THERAPEUTIC PROCEDURES'.