

hCG_2024410 Antibody (C-term)

Affinity Purified Rabbit Polyclonal Antibody (Pab)

Catalog # AP11040b

Product Information

Application	WB, FC, E
Primary Accession	Q2QD12
Other Accession	Q96AT9
Reactivity	Human, Mouse
Host	Rabbit
Clonality	Polyclonal
Isotype	Rabbit IgG
Clone Names	RB28346
Calculated MW	25023
Antigen Region	187-215

Additional Information

Gene ID	729020
Other Names	Ribulose-phosphate 3-epimerase-like protein 1, Ribulose-5-phosphate-3-epimerase-like protein 1, RPEL1
Target/Specificity	This hCG_2024410 antibody is generated from rabbits immunized with a KLH conjugated synthetic peptide between 187-215 amino acids from the C-terminal region of human hCG_2024410.
Dilution	WB~~1:1000 FC~~1:10~50 E~~Use at an assay dependent concentration.
Format	Purified polyclonal antibody supplied in PBS with 0.09% (W/V) sodium azide. This antibody is purified through a protein A column, followed by peptide affinity purification.
Storage	Maintain refrigerated at 2-8°C for up to 2 weeks. For long term storage store at -20°C in small aliquots to prevent freeze-thaw cycles.
Precautions	hCG_2024410 Antibody (C-term) is for research use only and not for use in diagnostic or therapeutic procedures.

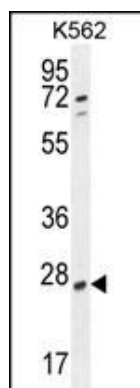
Protein Information

Name	RPEL1
Function	Catalyzes the reversible epimerization of D-ribulose 5- phosphate to D-xylulose 5-phosphate.

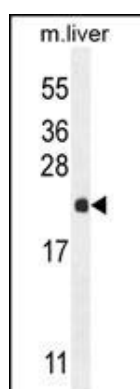
References

Marques, A.C., et al. PLoS Biol. 3 (11), E357 (2005) :
Venter, J.C., et al. Science 291(5507):1304-1351(2001)

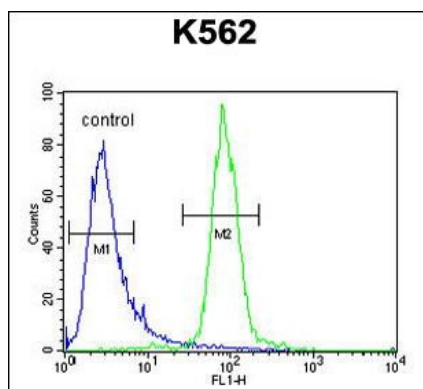
Images



hCG_2024410 Antibody (C-term) (Cat. #AP11040b)
western blot analysis in K562 cell line lysates
(35ug/lane). This demonstrates the hCG_2024410
antibody detected the hCG_2024410 protein (arrow).



hCG_2024410 Antibody (C-term) (Cat. #AP11040b)
western blot analysis in mouse liver tissue lysates
(35ug/lane). This demonstrates the CG antibody detected
the CG protein (arrow).



hCG_2024410 Antibody (C-term) (Cat. #AP11040b) flow
cytometric analysis of K562 cells (right histogram)
compared to a negative control cell (left
histogram). FITC-conjugated goat-anti-rabbit secondary
antibodies were used for the analysis.

Please note: All products are 'FOR RESEARCH USE ONLY. NOT FOR USE IN DIAGNOSTIC OR THERAPEUTIC PROCEDURES'.