

SATL1 Antibody (C-term)

Affinity Purified Rabbit Polyclonal Antibody (Pab)

Catalog # AP11044b

Product Information

Application	WB, E
Primary Accession	Q86VE3
Other Accession	NP_001012998.2
Reactivity	Human
Host	Rabbit
Clonality	Polyclonal
Isotype	Rabbit IgG
Clone Names	RB28405
Calculated MW	75812
Antigen Region	322-351

Additional Information

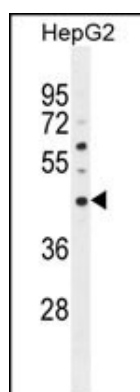
Gene ID	340562
Other Names	Spermidine/spermine N(1)-acetyltransferase-like protein 1, 231-, SATL1
Target/Specificity	This SATL1 antibody is generated from rabbits immunized with a KLH conjugated synthetic peptide between 322-351 amino acids from the C-terminal region of human SATL1.
Dilution	WB~~1:1000 E~~Use at an assay dependent concentration.
Format	Purified polyclonal antibody supplied in PBS with 0.09% (W/V) sodium azide. This antibody is purified through a protein A column, followed by peptide affinity purification.
Storage	Maintain refrigerated at 2-8°C for up to 2 weeks. For long term storage store at -20°C in small aliquots to prevent freeze-thaw cycles.
Precautions	SATL1 Antibody (C-term) is for research use only and not for use in diagnostic or therapeutic procedures.

Protein Information

Name	SATL1
------	-------

References

Images



SATL1 Antibody (C-term) (Cat. #AP11044b) western blot analysis in HepG2 cell line lysates (35ug/lane). This demonstrates the SATL1 antibody detected the SATL1 protein (arrow).

Please note: All products are 'FOR RESEARCH USE ONLY. NOT FOR USE IN DIAGNOSTIC OR THERAPEUTIC PROCEDURES'.