

# ICAM2 Antibody (Center)

Affinity Purified Rabbit Polyclonal Antibody (Pab)

Catalog # AP11047c

## Product Information

---

<b>Application</b>	WB, FC, E
<b>Primary Accession</b>	<a href="#">P13598</a>
<b>Other Accession</b>	<a href="#">NP_000864.2</a> , <a href="#">NP_001093256.1</a>
<b>Reactivity</b>	Human
<b>Host</b>	Rabbit
<b>Clonality</b>	Polyclonal
<b>Isotype</b>	Rabbit IgG
<b>Clone Names</b>	RB28558
<b>Calculated MW</b>	30654
<b>Antigen Region</b>	191-218

## Additional Information

---

<b>Gene ID</b>	3384
<b>Other Names</b>	Intercellular adhesion molecule 2, ICAM-2, CD102, ICAM2
<b>Target/Specificity</b>	This ICAM2 antibody is generated from rabbits immunized with a KLH conjugated synthetic peptide between 191-218 amino acids from the Central region of human ICAM2.
<b>Dilution</b>	WB~~1:1000 FC~~1:10~50 E~~Use at an assay dependent concentration.
<b>Format</b>	Purified polyclonal antibody supplied in PBS with 0.09% (W/V) sodium azide. This antibody is purified through a protein A column, followed by peptide affinity purification.
<b>Storage</b>	Maintain refrigerated at 2-8°C for up to 2 weeks. For long term storage store at -20°C in small aliquots to prevent freeze-thaw cycles.
<b>Precautions</b>	ICAM2 Antibody (Center) is for research use only and not for use in diagnostic or therapeutic procedures.

## Protein Information

---

<b>Name</b>	ICAM2
<b>Function</b>	ICAM proteins are ligands for the leukocyte adhesion protein LFA-1 (integrin alpha-L/beta-2). ICAM2 may play a role in lymphocyte recirculation by blocking LFA-1-dependent cell adhesion. It mediates adhesive interactions important for antigen-specific immune response, NK-cell mediated clearance,

lymphocyte recirculation, and other cellular interactions important for immune response and surveillance.

## Cellular Location

Membrane; Single-pass type I membrane protein. Cell projection, microvillus {ECO:0000250|UniProtKB:P35330}. Note=Co-localizes with RDX, EZR and MSN in microvilli. {ECO:0000250|UniProtKB:P35330}

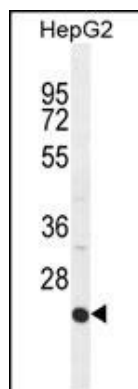
## Background

The protein encoded by this gene is a member of the intercellular adhesion molecule (ICAM) family. All ICAM proteins are type I transmembrane glycoproteins, contain 2-9 immunoglobulin-like C2-type domains, and bind to the leukocyte adhesion LFA-1 protein. This protein may play a role in lymphocyte recirculation by blocking LFA-1-dependent cell adhesion. It mediates adhesive interactions important for antigen-specific immune response, NK-cell mediated clearance, lymphocyte recirculation, and other cellular interactions important for immune response and surveillance. Several transcript variants encoding the same protein have been found for this gene.

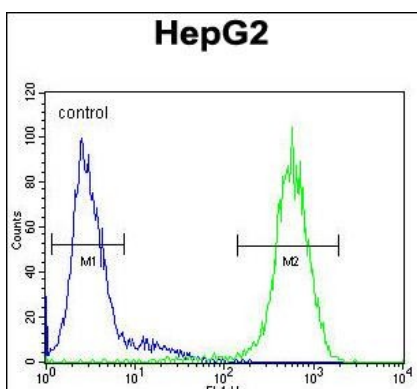
## References

- Han, S., et al. Hum. Immunol. 71(7):727-730(2010)  
Rajaraman, P., et al. Cancer Epidemiol. Biomarkers Prev. 19(5):1356-1361(2010)  
Davila, S., et al. Genes Immun. 11(3):232-238(2010)  
Sato, H., et al. Biochim. Biophys. Acta 1790(10):1198-1205(2009)  
Rajaraman, P., et al. Cancer Epidemiol. Biomarkers Prev. 18(5):1651-1658(2009)

## Images



ICAM2 Antibody (Center) (Cat. #AP11047c) western blot analysis in HepG2 cell line lysates (35ug/lane). This demonstrates the ICAM2 antibody detected the ICAM2 protein (arrow).



ICAM2 Antibody (Center) (Cat. #AP11047c) flow cytometric analysis of HepG2 cells (right histogram) compared to a negative control cell (left histogram). FITC-conjugated goat-anti-rabbit secondary antibodies were used for the analysis.

Please note: All products are 'FOR RESEARCH USE ONLY. NOT FOR USE IN DIAGNOSTIC OR THERAPEUTIC PROCEDURES'.