

# SRBD1 Antibody (C-term)

Affinity Purified Rabbit Polyclonal Antibody (Pab)

Catalog # AP11054b

## Product Information

---

<b>Application</b>	WB, IHC-P, E
<b>Primary Accession</b>	<a href="#">Q8N5C6</a>
<b>Other Accession</b>	<a href="#">NP_060549.4</a>
<b>Reactivity</b>	Human
<b>Host</b>	Rabbit
<b>Clonality</b>	Polyclonal
<b>Isotype</b>	Rabbit IgG
<b>Clone Names</b>	RB28716
<b>Calculated MW</b>	111776
<b>Antigen Region</b>	934-963

## Additional Information

---

<b>Gene ID</b>	55133
<b>Other Names</b>	S1 RNA-binding domain-containing protein 1, SRBD1
<b>Target/Specificity</b>	This SRBD1 antibody is generated from rabbits immunized with a KLH conjugated synthetic peptide between 934-963 amino acids from the C-terminal region of human SRBD1.
<b>Dilution</b>	WB~~1:1000 IHC-P~~1:100~500 E~~Use at an assay dependent concentration.
<b>Format</b>	Purified polyclonal antibody supplied in PBS with 0.09% (W/V) sodium azide. This antibody is purified through a protein A column, followed by peptide affinity purification.
<b>Storage</b>	Maintain refrigerated at 2-8°C for up to 2 weeks. For long term storage store at -20°C in small aliquots to prevent freeze-thaw cycles.
<b>Precautions</b>	SRBD1 Antibody (C-term) is for research use only and not for use in diagnostic or therapeutic procedures.

## Protein Information

---

<b>Name</b>	SRBD1
-------------	-------

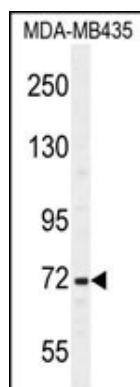
## References

---

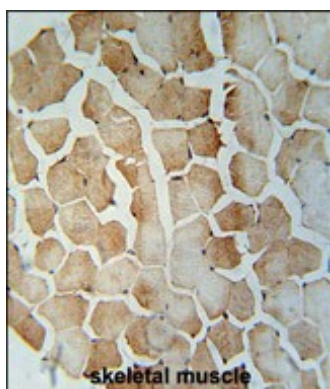
Rose, J.E., et al. Mol. Med. 16 (7-8), 247-253 (2010) :  
Meguro, A., et al. Ophthalmology 117(7):1331-1338(2010)  
Trynka, G., et al. Gut 58(8):1078-1083(2009)

## Images

---



SRBD1 Antibody (C-term) (Cat. #AP11054b) western blot analysis in MDA-MB435 cell line lysates (35ug/lane). This demonstrates the SRBD1 antibody detected the SRBD1 protein (arrow).



SRBD1 Antibody (C-term) (Cat. #AP11054b) immunohistochemistry analysis in formalin fixed and paraffin embedded human skeletal muscle followed by peroxidase conjugation of the secondary antibody and DAB staining. This data demonstrates the use of the SRBD1 Antibody (C-term) for immunohistochemistry. Clinical relevance has not been evaluated.

Please note: All products are 'FOR RESEARCH USE ONLY. NOT FOR USE IN DIAGNOSTIC OR THERAPEUTIC PROCEDURES'.