

C2orf51 Antibody (Center)

Affinity Purified Rabbit Polyclonal Antibody (Pab)

Catalog # AP11056c

Product Information

Application	FC, WB, E
Primary Accession	Q96LM6
Other Accession	NP_689883.1
Reactivity	Human
Host	Rabbit
Clonality	Polyclonal
Isotype	Rabbit IgG
Clone Names	RB28739
Calculated MW	20615
Antigen Region	73-101

Additional Information

Gene ID	200523
Other Names	Testis-expressed sequence 37 protein, Testis-specific conserved protein of 21 kDa, TEX37, C2orf51, TSC21
Target/Specificity	This C2orf51 antibody is generated from rabbits immunized with a KLH conjugated synthetic peptide between 73-101 amino acids from the Central region of human C2orf51.
Dilution	FC~~1:10~50 WB~~1:1000 E~~Use at an assay dependent concentration.
Format	Purified polyclonal antibody supplied in PBS with 0.09% (W/V) sodium azide. This antibody is purified through a protein A column, followed by peptide affinity purification.
Storage	Maintain refrigerated at 2-8°C for up to 2 weeks. For long term storage store at -20°C in small aliquots to prevent freeze-thaw cycles.
Precautions	C2orf51 Antibody (Center) is for research use only and not for use in diagnostic or therapeutic procedures.

Protein Information

Name	SPMIP9 (HGNC:26341)
Function	Microtubule inner protein (MIP) part of the dynein-decorated doublet microtubules (DMTs) in flagella axoneme.

Cellular Location

Nucleus {ECO:0000250|UniProtKB:Q9DAG4}. Cytoplasm. Cytoplasm, cytoskeleton, flagellum axoneme {ECO:0000250|UniProtKB:Q9DAG4}. Note=Present in the germ cell lineage at all stages (PubMed:26168773).

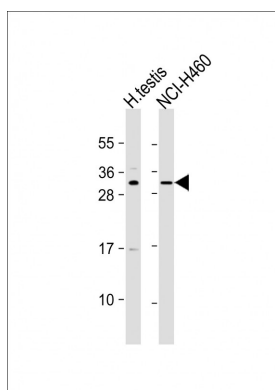
Tissue Location

Testis-specific (PubMed:17091336, PubMed:26168773). Detected in the germ cell lineage at all stages (PubMed:26168773)

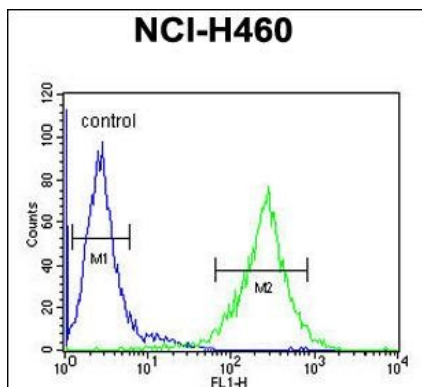
References

Yu, Z., et al. Mol. Biol. Rep. 34(2):127-134(2007)

Images



All lanes : Anti-C2orf51 Antibody (Center) at 1:1000 dilution Lane 1: human testis lysate Lane 2: NCI-H460 whole cell lysate Lysates/proteins at 20 µg per lane. Secondary Goat Anti-Rabbit IgG, (H+L), Peroxidase conjugated at 1/10000 dilution. Predicted band size : 21 kDa Blocking/Dilution buffer: 5% NFDM/TBST.



C2orf51 Antibody (Center) (Cat. #AP11056c) flow cytometric analysis of NCI-H460 cells (right histogram) compared to a negative control cell (left histogram).FITC-conjugated goat-anti-rabbit secondary antibodies were used for the analysis.

Please note: All products are 'FOR RESEARCH USE ONLY. NOT FOR USE IN DIAGNOSTIC OR THERAPEUTIC PROCEDURES'.