

TGM6 Antibody (Center)

Affinity Purified Rabbit Polyclonal Antibody (Pab)

Catalog # AP11062c

Product Information

Application	WB, IHC-P, FC, E
Primary Accession	O95932
Other Accession	NP_945345.2
Reactivity	Human
Host	Rabbit
Clonality	Polyclonal
Isotype	Rabbit IgG
Clone Names	RB28828
Calculated MW	79312
Antigen Region	394-422

Additional Information

Gene ID	343641
Other Names	Protein-glutamine gamma-glutamyltransferase 6, Transglutaminase Y, TGY, TGase Y, Transglutaminase-3-like, TGase-3-like, Transglutaminase-6, TG6, TGase-6, TGM6, TGM3L
Target/Specificity	This TGM6 antibody is generated from rabbits immunized with a KLH conjugated synthetic peptide between 394-422 amino acids from the Central region of human TGM6.
Dilution	WB~~1:1000 IHC-P~~1:100~500 FC~~1:10~50 E~~Use at an assay dependent concentration.
Format	Purified polyclonal antibody supplied in PBS with 0.09% (W/V) sodium azide. This antibody is purified through a protein A column, followed by peptide affinity purification.
Storage	Maintain refrigerated at 2-8°C for up to 2 weeks. For long term storage store at -20°C in small aliquots to prevent freeze-thaw cycles.
Precautions	TGM6 Antibody (Center) is for research use only and not for use in diagnostic or therapeutic procedures.

Protein Information

Name	TGM6
Synonyms	TGM3L

Function Catalyzes the cross-linking of proteins and the conjugation of polyamines to proteins.

Cellular Location Cytoplasm

Background

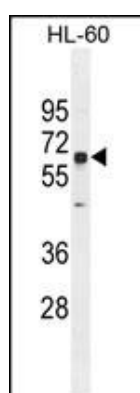
Catalyzes the cross-linking of proteins and the conjugation of polyamines to proteins (By similarity).

References

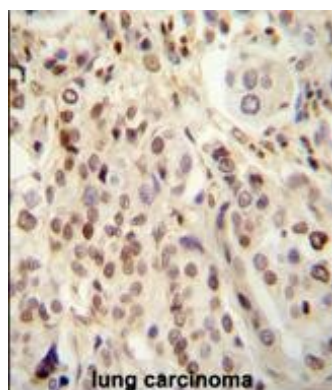
Hadjivassiliou, M., et al. Ann. Neurol. 64(3):332-343(2008)

Grenard, P., et al. J. Biol. Chem. 276(35):33066-33078(2001)

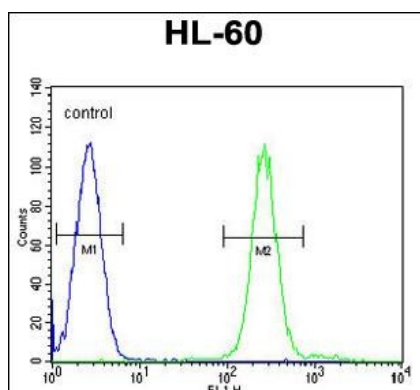
Images



TGM6 Antibody (Center) (Cat. #AP11062c) western blot analysis in HL-60 cell line lysates (35ug/lane). This demonstrates the TGM6 antibody detected the TGM6 protein (arrow).



TGM6 antibody (Center) (Cat. #AP11062c) immunohistochemistry analysis in formalin fixed and paraffin embedded human lung carcinoma followed by peroxidase conjugation of the secondary antibody and DAB staining. This data demonstrates the use of the TGM6 antibody (Center) for immunohistochemistry. Clinical relevance has not been evaluated.



TGM6 Antibody (Center) (Cat. #AP11062c) flow cytometric analysis of HL-60 cells (right histogram) compared to a negative control cell (left histogram). FITC-conjugated goat-anti-rabbit secondary antibodies were used for the analysis.