

# CCNB1 Antibody (C-term)

Purified Rabbit Polyclonal Antibody (Pab)

Catalog # AP11102b

## Product Information

---

<b>Application</b>	WB, IHC-P, E
<b>Primary Accession</b>	<a href="#">P14635</a>
<b>Other Accession</b>	<a href="#">NP_114172.1</a>
<b>Reactivity</b>	Human
<b>Host</b>	Rabbit
<b>Clonality</b>	Polyclonal
<b>Isotype</b>	Rabbit IgG
<b>Clone Names</b>	RB14992
<b>Calculated MW</b>	48337
<b>Antigen Region</b>	381-411

## Additional Information

---

<b>Gene ID</b>	891
<b>Other Names</b>	G2/mitotic-specific cyclin-B1, CCNB1, CCNB
<b>Target/Specificity</b>	This CCNB1 antibody is generated from rabbits immunized with a KLH conjugated synthetic peptide between 381-411 amino acids from the C-terminal region of human CCNB1.
<b>Dilution</b>	WB~~1:1000 IHC-P~~1:100~500 E~~Use at an assay dependent concentration.
<b>Format</b>	Purified polyclonal antibody supplied in PBS with 0.09% (W/V) sodium azide. This antibody is prepared by Saturated Ammonium Sulfate (SAS) precipitation followed by dialysis against PBS.
<b>Storage</b>	Maintain refrigerated at 2-8°C for up to 2 weeks. For long term storage store at -20°C in small aliquots to prevent freeze-thaw cycles.
<b>Precautions</b>	CCNB1 Antibody (C-term) is for research use only and not for use in diagnostic or therapeutic procedures.

## Protein Information

---

<b>Name</b>	CCNB1
<b>Synonyms</b>	CCNB
<b>Function</b>	Essential for the control of the cell cycle at the G2/M (mitosis) transition.

## Cellular Location

Cytoplasm. Nucleus. Cytoplasm, cytoskeleton, microtubule organizing center, centrosome

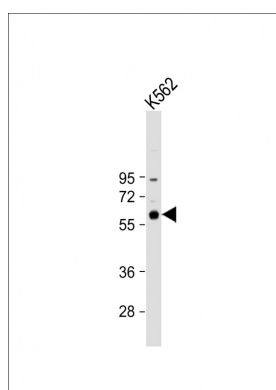
## Background

The protein encoded by this gene is a regulatory protein involved in mitosis. The gene product complexes with p34(cdc2) to form the maturation-promoting factor (MPF). Two alternative transcripts have been found, a constitutively expressed transcript and a cell cycle-regulated transcript, that is expressed predominantly during G2/M phase. The different transcripts result from the use of alternate transcription initiation sites. [provided by RefSeq].

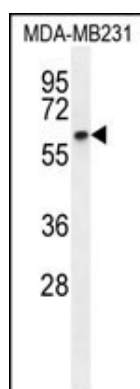
## References

Kreis, N.N., et al. *Oncogene* 29(41):5591-5603(2010)  
van Zon, W., et al. *J. Cell Biol.* 190(4):587-602(2010)  
Harley, M.E., et al. *EMBO J.* 29(14):2407-2420(2010)  
Olson, J.E., et al. *Breast Cancer Res. Treat.* (2010) In press :  
Nantajit, D., et al. *PLoS ONE* 5 (8), E12341 (2010) :

## Images

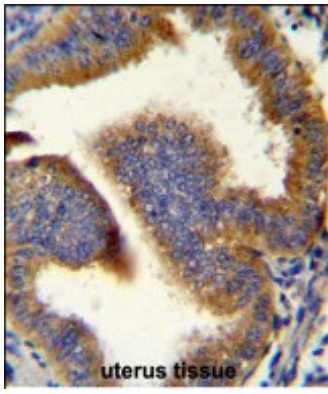


Anti-CCNB1 Antibody (C-term) at 1:1000 dilution + K562 whole cell lysate Lysates/proteins at 20 µg per lane. Secondary Goat Anti-Rabbit IgG, (H+L), Peroxidase conjugated at 1/10000 dilution. Predicted band size : 48 kDa Blocking/Dilution buffer: 5% NFDM/TBST.



CCNB1 Antibody (C-term) (Cat. #AP11102b) western blot analysis in MDA-MB231 cell line lysates (35ug/lane). This demonstrates the CCNB1 antibody detected the CCNB1 protein (arrow).

CCNB1 Antibody (C-term) (Cat. #AP11102b) immunohistochemistry analysis in formalin fixed and paraffin embedded human uterus tissue followed by peroxidase conjugation of the secondary antibody and DAB staining. This data demonstrates the use of CCNB1 Antibody (C-term) for immunohistochemistry. Clinical relevance has not been evaluated.



Please note: All products are 'FOR RESEARCH USE ONLY. NOT FOR USE IN DIAGNOSTIC OR THERAPEUTIC PROCEDURES'.