

# DDX27 Antibody (C-term)

Affinity Purified Rabbit Polyclonal Antibody (Pab)

Catalog # AP11105b

## Product Information

---

Application	WB, IHC-P, FC, E
Primary Accession	<a href="#">Q96GQ7</a>
Other Accession	<a href="#">A1A4H6</a> , <a href="#">NP_060365.7</a>
Reactivity	Human
Predicted	Bovine
Host	Rabbit
Clonality	Polyclonal
Isotype	Rabbit IgG
Clone Names	RB17936
Calculated MW	86605
Antigen Region	770-796

## Additional Information

---

Gene ID	55661
Other Names	Probable ATP-dependent RNA helicase DDX27, DEAD box protein 27, DDX27, RHLF
Target/Specificity	This DDX27 antibody is generated from rabbits immunized with a KLH conjugated synthetic peptide between 770-796 amino acids from the C-terminal region of human DDX27.
Dilution	WB~~1:1000 IHC-P~~1:100~500 FC~~1:10~50 E~~Use at an assay dependent concentration.
Format	Purified polyclonal antibody supplied in PBS with 0.05% (V/V) Proclin 300. This antibody is purified through a protein A column, followed by peptide affinity purification.
Storage	Maintain refrigerated at 2-8°C for up to 2 weeks. For long term storage store at -20°C in small aliquots to prevent freeze-thaw cycles.
Precautions	DDX27 Antibody (C-term) is for research use only and not for use in diagnostic or therapeutic procedures.

## Protein Information

---

Name	DDX27
Synonyms	cPERP-F {ECO:0000303   PubMed:20813266}, R

<b>Function</b>	Probable ATP-dependent RNA helicase. Component of the nucleolar ribosomal RNA (rRNA) processing machinery that regulates 3' end formation of ribosomal 47S rRNA (PubMed: <a href="#">25825154</a> ).
<b>Cellular Location</b>	Nucleus, nucleolus. Chromosome. Note=Associates with 60S and 90S pre-ribosomal particles (PubMed:25825154)

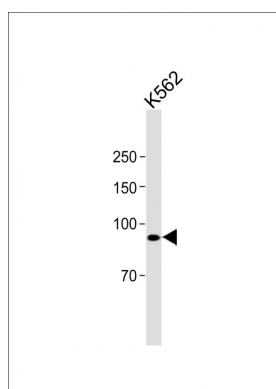
## Background

DEAD box proteins, characterized by the conserved motif Asp-Glu-Ala-Asp (DEAD), are putative RNA helicases. They are implicated in a number of cellular processes involving alteration of RNA secondary structure such as translation initiation, nuclear and mitochondrial splicing, and ribosome and spliceosome assembly. Based on their distribution patterns, some members of this family are believed to be involved in embryogenesis, spermatogenesis, and cellular growth and division. This gene encodes a DEAD box protein, the function of which has not been determined. [provided by RefSeq].

## References

Deloukas, P., et al. Nature 414(6866):865-871(2001)

## Images



All lanes: Anti-DDX27 Antibody (C-term) at 1:2000 dilution + K562 whole cell lysate Lysates/proteins at 20 µg per lane. Secondary: Goat Anti-Rabbit IgG, (H+L), Peroxidase conjugated (ASP1615) at 1/15000 dilution. Observed band size: 90 KDa Blocking/Dilution buffer: 5% NFDm/TBST.

Please note: All products are 'FOR RESEARCH USE ONLY. NOT FOR USE IN DIAGNOSTIC OR THERAPEUTIC PROCEDURES'.