

HIP1R Antibody (N-term)

Affinity Purified Rabbit Polyclonal Antibody (Pab)

Catalog # AP11109a

Product Information

Application	WB, IHC-P, FC, E
Primary Accession	O75146
Other Accession	NP_003950.1
Reactivity	Human
Host	Rabbit
Clonality	Polyclonal
Isotype	Rabbit IgG
Clone Names	RB18066
Calculated MW	119388
Antigen Region	98-126

Additional Information

Gene ID	9026
Other Names	Huntingtin-interacting protein 1-related protein, HIP1-related protein, Huntingtin-interacting protein 12, HIP-12, HIP1R, HIP12, KIAA0655
Target/Specificity	This HIP1R antibody is generated from rabbits immunized with a KLH conjugated synthetic peptide between 98-126 amino acids from the N-terminal region of human HIP1R.
Dilution	WB~~1:1000 IHC-P~~1:100~500 FC~~1:10~50 E~~Use at an assay dependent concentration.
Format	Purified polyclonal antibody supplied in PBS with 0.09% (W/V) sodium azide. This antibody is purified through a protein A column, followed by peptide affinity purification.
Storage	Maintain refrigerated at 2-8°C for up to 2 weeks. For long term storage store at -20°C in small aliquots to prevent freeze-thaw cycles.
Precautions	HIP1R Antibody (N-term) is for research use only and not for use in diagnostic or therapeutic procedures.

Protein Information

Name	HIP1R
Synonyms	HIP12, KIAA0655

Function	Component of clathrin-coated pits and vesicles, that may link the endocytic machinery to the actin cytoskeleton. Binds 3- phosphoinositides (via ENTH domain). May act through the ENTH domain to promote cell survival by stabilizing receptor tyrosine kinases following ligand-induced endocytosis.
Cellular Location	Cytoplasm, perinuclear region. Endomembrane system. Cytoplasmic vesicle, clathrin-coated vesicle membrane Note=Membrane-associated protein, mainly localized at the endocytic compartments and in the perinuclear region
Tissue Location	Brain, heart, kidney, pancreas, and liver, but not in lung or placenta

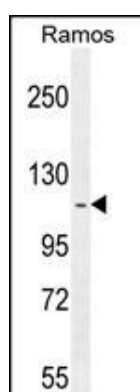
Background

This protein is a "fusion" protein encoding four enzymatic activities of the pyrimidine pathway (GATase, CPSase, ATCase and DHOase).

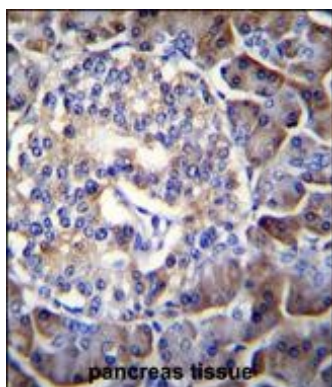
References

Rose, J. Phd, et al. Mol. Med. (2010) In press :
Kim, J.H., et al. Cell. Physiol. Biochem. 23 (1-3), 43-52 (2009) :
Wilbur, J.D., et al. J. Biol. Chem. 283(47):32870-32879(2008)
Poupon, V., et al. Proc. Natl. Acad. Sci. U.S.A. 105(1):168-173(2008)
Parker, J.A., et al. J. Neurosci. 27(41):11056-11064(2007)

Images

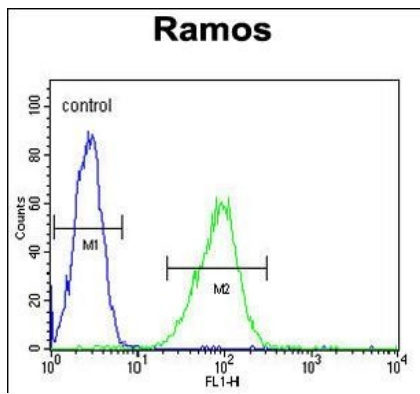


HIP1R Antibody (N-term) (Cat. #AP11109a) western blot analysis in Ramos cell line lysates (35ug/lane). This demonstrates the HIP1R antibody detected the HIP1R protein (arrow).



HIP1R Antibody (N-term) (Cat. #AP11109a) immunohistochemistry analysis in formalin fixed and paraffin embedded human pancreas tissue followed by peroxidase conjugation of the secondary antibody and DAB staining. This data demonstrates the use of HIP1R Antibody (N-term) for immunohistochemistry. Clinical relevance has not been evaluated.

HIP1R Antibody (N-term) (Cat. #AP11109a) flow cytometric analysis of Ramos cells (right histogram) compared to a negative control cell (left histogram). FITC-conjugated goat-anti-rabbit secondary antibodies were used for the analysis.



Please note: All products are 'FOR RESEARCH USE ONLY. NOT FOR USE IN DIAGNOSTIC OR THERAPEUTIC PROCEDURES'.