

FGL2 Antibody (C-term)

Affinity Purified Rabbit Polyclonal Antibody (Pab)

Catalog # AP11121b

Product Information

Application	WB, FC, E
Primary Accession	Q14314
Other Accession	NP_006673.1
Reactivity	Human, Rat, Mouse
Host	Rabbit
Clonality	Polyclonal
Isotype	Rabbit IgG
Clone Names	RB19509
Calculated MW	50229
Antigen Region	338-367

Additional Information

Gene ID	10875
Other Names	Fibroleukin, Fibrinogen-like protein 2, pT49, FGL2
Target/Specificity	This FGL2 antibody is generated from rabbits immunized with a KLH conjugated synthetic peptide between 338-367 amino acids from the C-terminal region of human FGL2.
Dilution	WB~~1:1000 FC~~1:25 E~~Use at an assay dependent concentration.
Format	Purified polyclonal antibody supplied in PBS with 0.05% (V/V) Proclin 300. This antibody is purified through a protein A column, followed by peptide affinity purification.
Storage	Maintain refrigerated at 2-8°C for up to 2 weeks. For long term storage store at -20°C in small aliquots to prevent freeze-thaw cycles.
Precautions	FGL2 Antibody (C-term) is for research use only and not for use in diagnostic or therapeutic procedures.

Protein Information

Name	FGL2
Function	May play a role in physiologic lymphocyte functions at mucosal sites.
Cellular Location	Secreted.

Tissue Location

Constitutively expressed in cytotoxic T-cells.

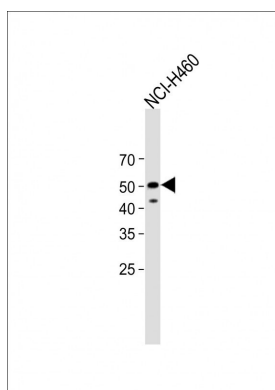
Background

The protein encoded by this gene is a secreted protein that is similar to the beta- and gamma-chains of fibrinogen. The carboxyl-terminus of the encoded protein consists of the fibrinogen-related domains (FRED). The encoded protein forms a tetrameric complex which is stabilized by interchain disulfide bonds. This protein may play a role in physiologic functions at mucosal sites.

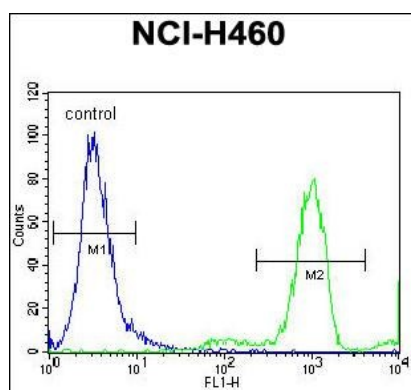
References

Liu, Y., et al. Biochem. Biophys. Res. Commun. 396(2):555-561(2010)
Hsieh, Y.H., et al. Bull. Math. Biol. 72(1):122-132(2010)
Siu, K.L., et al. J. Gen. Virol. 90 (PT 9), 2107-2113 (2009) :
Han, M., et al. J. Biol. Chem. 283(47):32715-32729(2008)
Su, K., et al. World J. Gastroenterol. 14(39):5980-5989(2008)

Images



All lanes: Anti-FGL2 Antibody (C-term) at 1:2000 dilution + NCI-H460 whole cell lysate Lysates/proteins at 20 µg per lane. Secondary Goat Anti-Rabbit IgG, (H+L), Peroxidase conjugated (ASP1615) at 1/15000 dilution. Observed band size: 50KDa Blocking/Dilution buffer: 5% NFDM/TBST.



FGL2 Antibody (C-term) (Cat. #AP11121b) flow cytometric analysis of NCI-H460 cells (right histogram) compared to a negative control cell (left histogram). FITC-conjugated goat-anti-rabbit secondary antibodies were used for the analysis.

Please note: All products are 'FOR RESEARCH USE ONLY. NOT FOR USE IN DIAGNOSTIC OR THERAPEUTIC PROCEDURES'.