

ACAP1 Antibody (N-term)

Affinity Purified Rabbit Polyclonal Antibody (Pab)

Catalog # AP11134a

Product Information

Application	WB, IHC-P, E
Primary Accession	Q15027
Other Accession	Q8K2H4 , NP_055531.1
Reactivity	Human, Mouse
Host	Rabbit
Clonality	Polyclonal
Isotype	Rabbit IgG
Clone Names	RB24261
Calculated MW	81536
Antigen Region	96-125

Additional Information

Gene ID	9744
Other Names	Arf-GAP with coiled-coil, ANK repeat and PH domain-containing protein 1, Centaurin-beta-1, Cnt-b1, ACAP1, CENTB1, KIAA0050
Target/Specificity	This ACAP1 antibody is generated from rabbits immunized with a KLH conjugated synthetic peptide between 96-125 amino acids from the N-terminal region of human ACAP1.
Dilution	WB~~1:1000 IHC-P~~1:100~500 E~~Use at an assay dependent concentration.
Format	Purified polyclonal antibody supplied in PBS with 0.09% (W/V) sodium azide. This antibody is purified through a protein A column, followed by peptide affinity purification.
Storage	Maintain refrigerated at 2-8°C for up to 2 weeks. For long term storage store at -20°C in small aliquots to prevent freeze-thaw cycles.
Precautions	ACAP1 Antibody (N-term) is for research use only and not for use in diagnostic or therapeutic procedures.

Protein Information

Name	ACAP1
Synonyms	CENTB1, KIAA0050
Function	GTPase-activating protein (GAP) for ADP ribosylation factor 6 (ARF6)

required for clathrin-dependent export of proteins from recycling endosomes to trans-Golgi network and cell surface. Required for regulated export of ITGB1 from recycling endosomes to the cell surface and ITGB1-dependent cell migration.

Cellular Location

Recycling endosome membrane; Peripheral membrane protein; Cytoplasmic side

Tissue Location

Highest level in lung and spleen. Low level in heart, kidney, liver and pancreas.

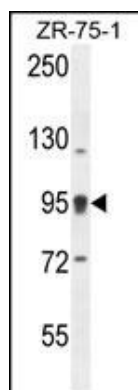
Background

Catalyzes the transfer of Gal to GlcNAc-based acceptors with a preference for the core3 O-linked glycan GlcNAc(beta1,3)GalNAc structure. Can use glycolipid LC3Cer as an efficient acceptor.

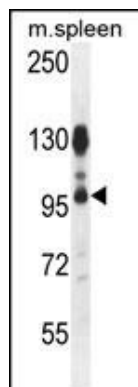
References

Rose, J.E., et al. Mol. Med. 16 (7-8), 247-253 (2010) :
Cuthbert, E.J., et al. Am. J. Physiol., Cell Physiol. 294 (1), C263-C270 (2008) :
Li, J., et al. J. Cell Biol. 178(3):453-464(2007)
Wu, C., et al. Proteomics 7(11):1775-1785(2007)
Shinozaki-Narikawa, N., et al. Traffic 7(11):1539-1550(2006)

Images

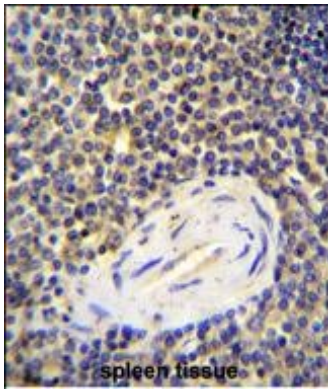


ACAP1 Antibody (N-term) (Cat. #AP11134a) western blot analysis in ZR-75-1 cell line lysates (35ug/lane). This demonstrates the ACAP1 antibody detected the ACAP1 protein (arrow).



ACAP1 Antibody (N-term) (Cat. #AP11134a) western blot analysis in mouse spleen tissue lysates (35ug/lane). This demonstrates the ACAP1 antibody detected the ACAP1 protein (arrow).

ACAP1 Antibody (N-term) (Cat. #AP11134a) immunohistochemistry analysis in formalin fixed and paraffin embedded human spleen tissue followed by peroxidase conjugation of the secondary antibody and DAB staining. This data demonstrates the



use of ACAP1 Antibody (N-term) for immunohistochemistry. Clinical relevance has not been evaluated.

Please note: All products are 'FOR RESEARCH USE ONLY. NOT FOR USE IN DIAGNOSTIC OR THERAPEUTIC PROCEDURES'.