

# CUZD1 Antibody (C-term)

Affinity Purified Rabbit Polyclonal Antibody (Pab)

Catalog # AP11139b

## Product Information

Application	IHC-P, IF, WB, E
Primary Accession	<a href="#">Q86UP6</a>
Other Accession	<a href="#">NP_071317.2</a>
Reactivity	Human
Host	Rabbit
Clonality	Polyclonal
Isotype	Rabbit IgG
Calculated MW	68153
Antigen Region	579-607

## Additional Information

Gene ID	50624
Other Names	CUB and zona pellucida-like domain-containing protein 1, CUB and ZP domain-containing protein 1, Transmembrane protein UO-44, CUZD1 {ECO:0000312   EMBL:CAH700061}
Target/Specificity	This CUZD1 antibody is generated from rabbits immunized with a KLH conjugated synthetic peptide between 579-607 amino acids from the C-terminal region of human CUZD1.
Dilution	IHC-P~~1:100~500 IF~~1:10~50 WB~~1:1000 E~~Use at an assay dependent concentration.
Format	Purified polyclonal antibody supplied in PBS with 0.09% (W/V) sodium azide. This antibody is purified through a protein A column, followed by peptide affinity purification.
Storage	Maintain refrigerated at 2-8°C for up to 2 weeks. For long term storage store at -20°C in small aliquots to prevent freeze-thaw cycles.
Precautions	CUZD1 Antibody (C-term) is for research use only and not for use in diagnostic or therapeutic procedures.

## Protein Information

Name	CUZD1 {ECO:0000312   EMBL:CAH70006.1}
Function	Localized to zymogen granules, where it functions in trypsinogen activation (By similarity). May indirectly regulate cell motility, cell-cell and

cell/extracellular matrix interactions (PubMed:[15184879](#)).

#### Cellular Location

Zymogen granule membrane {ECO:0000250|UniProtKB:P70412}; Single-pass type I membrane protein {ECO:0000250|UniProtKB:P70412}

#### Tissue Location

Detected in pancreas and epithelium of ovary. Expressed at higher levels in ovarian tumors than in normal tissue

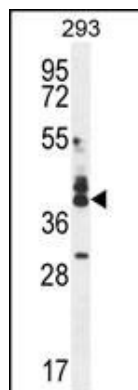
## Background

Potent and specific cellular inhibitor of CaM-kinase II (CAMK2). Traps Ca(2+)/calmodulin on CAMK2. May play an important role in the regulation of cell growth when overexpressed in colon adenocarcinoma LoVo cells. Traps Ca(2+)/calmodulin on CAMK2.

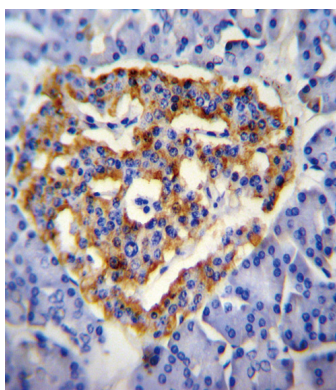
## References

Leong, C.T., et al. Oncogene 26(6):870-880(2007) Blanchetot, C., et al. Methods 35(1):44-53(2005) Leong, C.T., et al. Oncogene 23(33):5707-5718(2004) Deloukas, P., et al. Nature 429(6990):375-381(2004) Clark, H.F., et al. Genome Res. 13(10):2265-2270(2003)

## Images

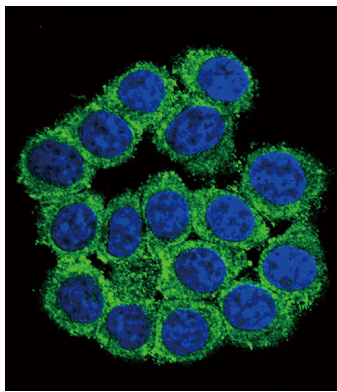


CUZD1 Antibody (C-term) (Cat. #AP11139b) western blot analysis in human normal uterus tissue lysates (35ug/lane). This demonstrates the CUZD1 antibody detected the CUZD1 protein (arrow).



CUZD1 Antibody (C-term) (Cat. #AP11139b) immunohistochemistry analysis in formalin fixed and paraffin embedded human pancreas tissue followed by peroxidase conjugation of the secondary antibody and DAB staining. This data demonstrates the use of CUZD1 Antibody (C-term) for immunohistochemistry. Clinical relevance has not been evaluated.

Confocal immunofluorescent analysis of CUZD1 Antibody (C-term) (Cat#AP11139b) with 293 cell followed by Alexa Fluor 488-conjugated goat anti-rabbit IgG (green). DAPI was used to stain the cell nuclear (blue).



Please note: All products are 'FOR RESEARCH USE ONLY. NOT FOR USE IN DIAGNOSTIC OR THERAPEUTIC PROCEDURES'.