

# MBD3L2 Antibody (C-term)

Affinity Purified Rabbit Polyclonal Antibody (Pab)

Catalog # AP11160b

## Product Information

---

<b>Application</b>	WB, E
<b>Primary Accession</b>	<a href="#">Q8NHZ7</a>
<b>Other Accession</b>	<a href="#">NP_653215.2</a>
<b>Reactivity</b>	Human
<b>Host</b>	Rabbit
<b>Clonality</b>	Polyclonal
<b>Isotype</b>	Rabbit IgG
<b>Clone Names</b>	RB28830
<b>Calculated MW</b>	22994
<b>Antigen Region</b>	176-204

## Additional Information

---

<b>Gene ID</b>	125997
<b>Other Names</b>	Methyl-CpG-binding domain protein 3-like 2, MBD3-like protein 2, MBD3L2
<b>Target/Specificity</b>	This MBD3L2 antibody is generated from rabbits immunized with a KLH conjugated synthetic peptide between 176-204 amino acids from the C-terminal region of human MBD3L2.
<b>Dilution</b>	WB~~1:1000 E~~Use at an assay dependent concentration.
<b>Format</b>	Purified polyclonal antibody supplied in PBS with 0.09% (W/V) sodium azide. This antibody is purified through a protein A column, followed by peptide affinity purification.
<b>Storage</b>	Maintain refrigerated at 2-8°C for up to 2 weeks. For long term storage store at -20°C in small aliquots to prevent freeze-thaw cycles.
<b>Precautions</b>	MBD3L2 Antibody (C-term) is for research use only and not for use in diagnostic or therapeutic procedures.

## Protein Information

---

<b>Name</b>	MBD3L2
<b>Function</b>	May displace the NuRD complex from chromatin.
<b>Cellular Location</b>	Nucleus.

**Tissue Location**

Detected at low levels in several somatic tissues (PubMed:12504854, PubMed:15701600). Highly expressed in the ovarian teratocarcinoma cell line PA-1 (PubMed:12504854)

**Background**

---

This gene encodes a protein that is related to methyl-CpG-binding proteins but lacks the methyl-CpG binding domain. The protein has been found in germ cell tumors and some somatic tissues.

**References**

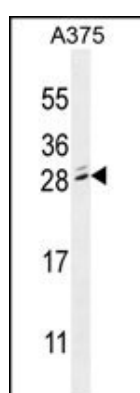
---

Jin, S.G., et al. J. Biol. Chem. 280(13):12700-12709(2005)

Jiang, C.L., et al. Genomics 80(6):621-629(2002)

**Images**

---



MBD3L2 Antibody (C-term) (Cat. #AP11160b) western blot analysis in A375 cell line lysates (35ug/lane). This demonstrates the MBD3L2 antibody detected the MBD3L2 protein (arrow).

Please note: All products are 'FOR RESEARCH USE ONLY. NOT FOR USE IN DIAGNOSTIC OR THERAPEUTIC PROCEDURES'.