

PMPCA Antibody (C-term)

Affinity Purified Rabbit Polyclonal Antibody (Pab)
Catalog # AP11161b

Product Information

Application	WB, FC, E
Primary Accession	Q10713
Other Accession	NP_055975.1
Reactivity	Human
Host	Rabbit
Clonality	Polyclonal
Isotype	Rabbit IgG
Clone Names	RB28847
Calculated MW	58253
Antigen Region	454-483

Additional Information

Gene ID	23203
Other Names	Mitochondrial-processing peptidase subunit alpha, Alpha-MPP, P-55, PMPCA, INPP5E, KIAA0123, MPPA
Target/Specificity	This PMPCA antibody is generated from rabbits immunized with a KLH conjugated synthetic peptide between 454-483 amino acids from the C-terminal region of human PMPCA.
Dilution	WB~~1:1000 FC~~1:10~50 E~~Use at an assay dependent concentration.
Format	Purified polyclonal antibody supplied in PBS with 0.09% (W/V) sodium azide. This antibody is purified through a protein A column, followed by peptide affinity purification.
Storage	Maintain refrigerated at 2-8°C for up to 2 weeks. For long term storage store at -20°C in small aliquots to prevent freeze-thaw cycles.
Precautions	PMPCA Antibody (C-term) is for research use only and not for use in diagnostic or therapeutic procedures.

Protein Information

Name	PMPCA
Synonyms	INPP5E, KIAA0123, MPPA
Function	Substrate recognition and binding subunit of the essential mitochondrial

processing protease (MPP), which cleaves the mitochondrial sequence off newly imported precursor proteins.

Cellular Location

Mitochondrion matrix {ECO:0000250 | UniProtKB:P20069}. Mitochondrion inner membrane

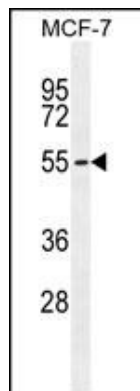
Tissue Location

Ubiquitously expressed with highest expression in fetal tissues and adult brain, cerebellum and cerebellar vermis

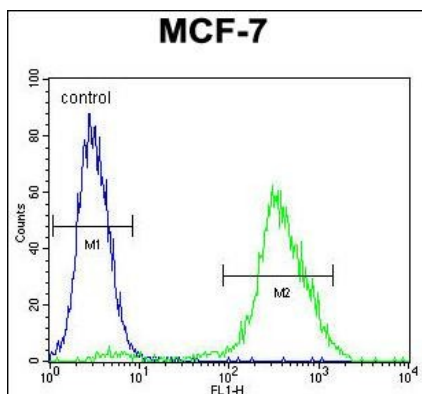
References

Hassel, S., et al. Proteomics 4(5):1346-1358(2004)
Harris, R.A., et al. Proteomics 2(2):212-223(2002)
Nagao, Y., et al. J. Biol. Chem. 275(44):34552-34556(2000)
Simpson, J.C., et al. EMBO Rep. 1(3):287-292(2000)
Luciano, P., et al. J. Mol. Biol. 272(2):213-225(1997)

Images



PMPCA Antibody (C-term) (Cat. #AP11161b) western blot analysis in MCF-7 cell line lysates (35ug/lane). This demonstrates the PMPCA antibody detected the PMPCA protein (arrow).



PMPCA Antibody (C-term) (Cat. #AP11161b) flow cytometric analysis of MCF-7 cells (right histogram) compared to a negative control cell (left histogram). FITC-conjugated goat-anti-rabbit secondary antibodies were used for the analysis.

Please note: All products are 'FOR RESEARCH USE ONLY. NOT FOR USE IN DIAGNOSTIC OR THERAPEUTIC PROCEDURES'.