

# NXPH4 Antibody (C-term)

Affinity Purified Rabbit Polyclonal Antibody (Pab)

Catalog # AP11180b

## Product Information

---

<b>Application</b>	WB, FC, E
<b>Primary Accession</b>	<a href="#">Q95158</a>
<b>Other Accession</b>	<a href="#">Q9Z2N4</a> , <a href="#">NP_009155.1</a>
<b>Reactivity</b>	Human
<b>Predicted</b>	Rat
<b>Host</b>	Rabbit
<b>Clonality</b>	Polyclonal
<b>Isotype</b>	Rabbit IgG
<b>Clone Names</b>	RB28975
<b>Calculated MW</b>	33065
<b>Antigen Region</b>	219-248

## Additional Information

---

<b>Gene ID</b>	11247
<b>Other Names</b>	Neurexophilin-4, NXPH4, NPH4
<b>Target/Specificity</b>	This NXPH4 antibody is generated from rabbits immunized with a KLH conjugated synthetic peptide between 219-248 amino acids from the C-terminal region of human NXPH4.
<b>Dilution</b>	WB~~1:1000 FC~~1:10~50 E~~Use at an assay dependent concentration.
<b>Format</b>	Purified polyclonal antibody supplied in PBS with 0.09% (W/V) sodium azide. This antibody is purified through a protein A column, followed by peptide affinity purification.
<b>Storage</b>	Maintain refrigerated at 2-8°C for up to 2 weeks. For long term storage store at -20°C in small aliquots to prevent freeze-thaw cycles.
<b>Precautions</b>	NXPH4 Antibody (C-term) is for research use only and not for use in diagnostic or therapeutic procedures.

## Protein Information

---

<b>Name</b>	NXPH4
<b>Synonyms</b>	NPH4
<b>Function</b>	May be signaling molecules that resemble neuropeptides and that act by

binding to alpha-neurexins and possibly other receptors.

**Cellular Location**

Secreted.

**Tissue Location**

Expressed in brain, spleen, and testis.

## Background

---

An adhesion molecule that interacts with extracellular matrix molecules in developing teeth and may play important roles in differentiation and maintenance of odontoblasts as well as in dentin formation (By similarity).

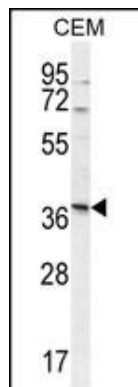
## References

---

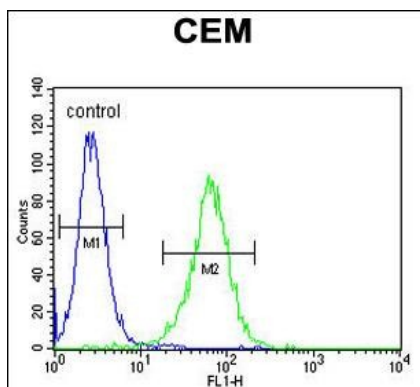
Lamesch, P., et al. Genomics 89(3):307-315(2007)  
Clark, H.F., et al. Genome Res. 13(10):2265-2270(2003)  
Missler, M., et al. J. Neurosci. 18(10):3630-3638(1998)

## Images

---



NXPH4 Antibody (C-term) (Cat. #AP11180b) western blot analysis in CEM cell line lysates (35ug/lane). This demonstrates the NXPH4 antibody detected the NXPH4 protein (arrow).



NXPH4 Antibody (C-term) (Cat. #AP11180b) flow cytometric analysis of CEM cells (right histogram) compared to a negative control cell (left histogram). FITC-conjugated goat-anti-rabbit secondary antibodies were used for the analysis.

Please note: All products are 'FOR RESEARCH USE ONLY. NOT FOR USE IN DIAGNOSTIC OR THERAPEUTIC PROCEDURES'.