

# NHEDC1 Antibody (N-term)

Affinity Purified Rabbit Polyclonal Antibody (Pab)

Catalog # AP11182a

## Product Information

---

<b>Application</b>	WB, E
<b>Primary Accession</b>	<a href="#">Q4ZJI4</a>
<b>Other Accession</b>	<a href="#">NP_001094344.1</a> , <a href="#">NP_631912.2</a>
<b>Reactivity</b>	Human
<b>Host</b>	Rabbit
<b>Clonality</b>	Polyclonal
<b>Isotype</b>	Rabbit IgG
<b>Clone Names</b>	RB28984
<b>Calculated MW</b>	56054
<b>Antigen Region</b>	26-55

## Additional Information

---

<b>Gene ID</b>	150159
<b>Other Names</b>	Sodium/hydrogen exchanger 9B1, Na(+)/H(+) exchanger-like domain-containing protein 1, NHE domain-containing protein 1, Sodium/hydrogen exchanger-like domain-containing protein 1, Solute carrier family 9 subfamily B member 1, SLC9B1, NHEDC1
<b>Target/Specificity</b>	This NHEDC1 antibody is generated from rabbits immunized with a KLH conjugated synthetic peptide between 26-55 amino acids from the N-terminal region of human NHEDC1.
<b>Dilution</b>	WB~~1:1000 E~~Use at an assay dependent concentration.
<b>Format</b>	Purified polyclonal antibody supplied in PBS with 0.09% (W/V) sodium azide. This antibody is purified through a protein A column, followed by peptide affinity purification.
<b>Storage</b>	Maintain refrigerated at 2-8°C for up to 2 weeks. For long term storage store at -20°C in small aliquots to prevent freeze-thaw cycles.
<b>Precautions</b>	NHEDC1 Antibody (N-term) is for research use only and not for use in diagnostic or therapeutic procedures.

## Protein Information

---

<b>Name</b>	SLC9B1 ( <a href="#">HGNC:24244</a> )
<b>Function</b>	Sperm-specific Na(+)/H(+) exchanger involved in intracellular pH regulation

of spermatozoa. Involved in sperm motility and fertility.

**Cellular Location**

Cell projection, cilium, flagellum membrane  
{ECO:0000250|UniProtKB:Q8C0X2}; Multi-pass membrane protein

**Tissue Location**

Expressed only in the testis.

## Background

---

The protein encoded by this gene is a sodium/hydrogen exchanger and transmembrane protein. Highly conserved orthologs of this gene have been found in other mammalian species. The expression of this gene may be limited to testis. Multiple transcript variants encoding different isoforms have been found for this gene.

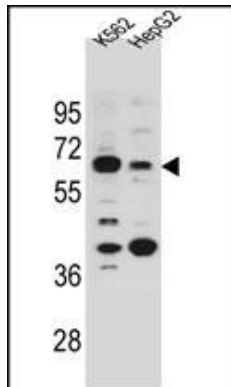
## References

---

Ye, G., et al. Mol. Biol. Rep. 33(3):175-180(2006)

## Images

---



NHEDC1 Antibody (N-term) (Cat. #AP11182a) western blot analysis in K562 and HepG2 cell line lysates (35ug/lane). This demonstrates the NHEDC1 antibody detected the NHEDC1 protein (arrow).

Please note: All products are 'FOR RESEARCH USE ONLY. NOT FOR USE IN DIAGNOSTIC OR THERAPEUTIC PROCEDURES'.