

EPGN Antibody (N-term)

Affinity Purified Rabbit Polyclonal Antibody (Pab)

Catalog # AP11242a

Product Information

Application	WB, FC, E
Primary Accession	Q6UW88
Other Accession	NP_001013460.1
Reactivity	Human
Host	Rabbit
Clonality	Polyclonal
Isotype	Rabbit IgG
Clone Names	RB22709
Calculated MW	17091
Antigen Region	24-51

Additional Information

Gene ID	255324
Other Names	Epigen, Epithelial mitogen, EPG, EPGN
Target/Specificity	This EPGN antibody is generated from rabbits immunized with a KLH conjugated synthetic peptide between 24-51 amino acids from the N-terminal region of human EPGN.
Dilution	WB~~1:1000 FC~~1:10~50 E~~Use at an assay dependent concentration.
Format	Purified polyclonal antibody supplied in PBS with 0.09% (W/V) sodium azide. This antibody is purified through a protein A column, followed by peptide affinity purification.
Storage	Maintain refrigerated at 2-8°C for up to 2 weeks. For long term storage store at -20°C in small aliquots to prevent freeze-thaw cycles.
Precautions	EPGN Antibody (N-term) is for research use only and not for use in diagnostic or therapeutic procedures.

Protein Information

Name	EPGN
Function	Promotes the growth of epithelial cells. May stimulate the phosphorylation of EGFR and mitogen-activated protein kinases.
Cellular Location	[Isoform 1]: Membrane; Single-pass type I membrane protein [Isoform 3]:

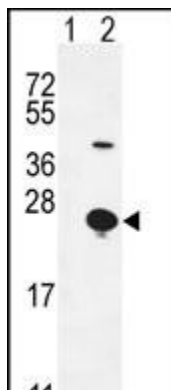
Background

Promotes the growth of epithelial cells. May stimulate the phosphorylation of EGFR and mitogen-activated protein kinases.

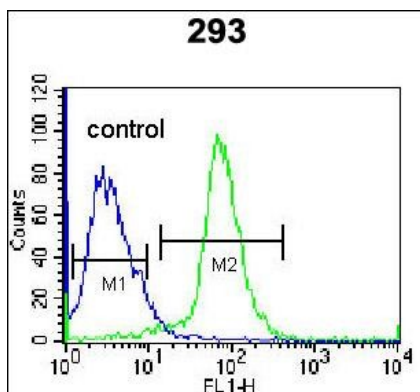
References

Lasky-Su, J., et al. Am. J. Med. Genet. B Neuropsychiatr. Genet. 147B (8), 1345-1354 (2008) :
Kochupurakkal, B.S., et al. J. Biol. Chem. 280(9):8503-8512(2005)
Zhang, Z., et al. Protein Sci. 13(10):2819-2824(2004)
Clark, H.F., et al. Genome Res. 13(10):2265-2270(2003)
Strachan, L., et al. J. Biol. Chem. 276(21):18265-18271(2001)

Images



Western blot analysis of EPGN (arrow) using rabbit polyclonal EPGN Antibody (N-term) (Cat. #AP11242a). 293 cell lysates (2 ug/lane) either nontransfected (Lane 1) or transiently transfected (Lane 2) with the EPGN gene.



EPGN Antibody (N-term) (Cat. #AP11242a) flow cytometric analysis of 293 cells (right histogram) compared to a negative control cell (left histogram). FITC-conjugated goat-anti-rabbit secondary antibodies were used for the analysis.

Please note: All products are 'FOR RESEARCH USE ONLY. NOT FOR USE IN DIAGNOSTIC OR THERAPEUTIC PROCEDURES'.