

# GIGYF1 Antibody (Center)

Affinity Purified Rabbit Polyclonal Antibody (Pab)

Catalog # AP11245c

## Product Information

---

<b>Application</b>	WB, E
<b>Primary Accession</b>	<a href="#">O75420</a>
<b>Other Accession</b>	<a href="#">Q99MR1</a> , <a href="#">NP_072096.2</a>
<b>Reactivity</b>	Human, Rat, Mouse
<b>Predicted</b>	Mouse
<b>Host</b>	Rabbit
<b>Clonality</b>	Polyclonal
<b>Isotype</b>	Rabbit IgG
<b>Clone Names</b>	RB24616
<b>Calculated MW</b>	114601
<b>Antigen Region</b>	666-694

## Additional Information

---

<b>Gene ID</b>	64599
<b>Other Names</b>	PERQ amino acid-rich with GYF domain-containing protein 1, GRB10-interacting GYF protein 1, GIGYF1, CDS2, PERQ1
<b>Target/Specificity</b>	This GIGYF1 antibody is generated from rabbits immunized with a KLH conjugated synthetic peptide between 666-694 amino acids from the Central region of human GIGYF1.
<b>Dilution</b>	WB~~1:2000 E~~Use at an assay dependent concentration.
<b>Format</b>	Purified polyclonal antibody supplied in PBS with 0.09% (W/V) sodium azide. This antibody is purified through a protein A column, followed by peptide affinity purification.
<b>Storage</b>	Maintain refrigerated at 2-8°C for up to 2 weeks. For long term storage store at -20°C in small aliquots to prevent freeze-thaw cycles.
<b>Precautions</b>	GIGYF1 Antibody (Center) is for research use only and not for use in diagnostic or therapeutic procedures.

## Protein Information

---

<b>Name</b>	GIGYF1
<b>Synonyms</b>	CDS2, PERQ1

## Function

May act cooperatively with GRB10 to regulate tyrosine kinase receptor signaling. May increase IGF1 receptor phosphorylation under IGF1 stimulation as well as phosphorylation of IRS1 and SHC1 (By similarity).

## Background

---

May act cooperatively with GRB10 to regulate tyrosine kinase receptor signaling. May increase IGF1 receptor phosphorylation under IGF1 stimulation as well as phosphorylation of IRS1 and SHC1 (By similarity).

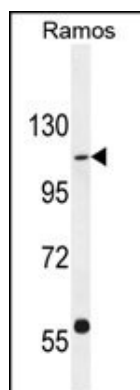
## References

---

Szafranski, K., et al. Genome Biol. 8 (8), R154 (2007) :  
Beausoleil, S.A., et al. Nat. Biotechnol. 24(10):1285-1292(2006)  
Giovannone, B., et al. J. Biol. Chem. 278(34):31564-31573(2003)  
Wilson, M.D., et al. Nucleic Acids Res. 29(6):1352-1365(2001)  
Glockner, G., et al. Genome Res. 8(10):1060-1073(1998)

## Images

---



GIGYF1 Antibody (Center) (Cat. #AP11245c) western blot analysis in Ramos cell line lysates (35ug/lane). This demonstrates the GIGYF1 antibody detected the GIGYF1 protein (arrow).

Please note: All products are 'FOR RESEARCH USE ONLY. NOT FOR USE IN DIAGNOSTIC OR THERAPEUTIC PROCEDURES'.