

TMEM151B Antibody (N-term)

Affinity Purified Rabbit Polyclonal Antibody (Pab)

Catalog # AP11246a

Product Information

Application	WB, FC, E
Primary Accession	Q8IW70
Other Accession	NP_001131032.1
Reactivity	Human
Host	Rabbit
Clonality	Polyclonal
Isotype	Rabbit IgG
Clone Names	RB27401
Calculated MW	61506
Antigen Region	127-155

Additional Information

Gene ID	441151
Other Names	Transmembrane protein 151B, Transmembrane protein 193, TMEM151B, C6orf137, TMEM193
Target/Specificity	This TMEM151B antibody is generated from rabbits immunized with a KLH conjugated synthetic peptide between 127-155 amino acids from the N-terminal region of human TMEM151B.
Dilution	WB~~1:1000 FC~~1:10~50 E~~Use at an assay dependent concentration.
Format	Purified polyclonal antibody supplied in PBS with 0.09% (W/V) sodium azide. This antibody is purified through a protein A column, followed by peptide affinity purification.
Storage	Maintain refrigerated at 2-8°C for up to 2 weeks. For long term storage store at -20°C in small aliquots to prevent freeze-thaw cycles.
Precautions	TMEM151B Antibody (N-term) is for research use only and not for use in diagnostic or therapeutic procedures.

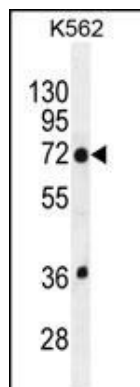
Protein Information

Name	TMEM151B
Synonyms	C6orf137, TMEM193
Cellular Location	Membrane; Multi-pass membrane protein

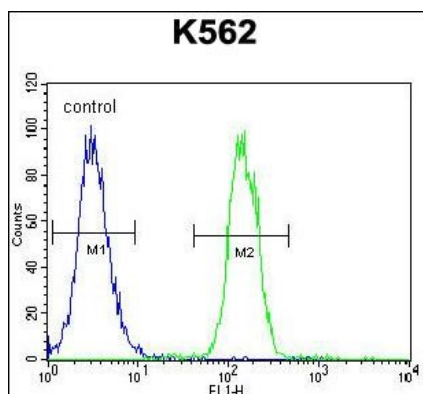
References

Hosgood, H.D. III, et al. *Occup Environ Med* 66(12):848-853(2009)
Tsai, J.Y., et al. *Nat. Genet.* 8(4):321-322(1994)

Images



TMEM151B Antibody (N-term) (Cat. #AP11246a) western blot analysis in K562 cell line lysates (35ug/lane). This demonstrates the TMEM151B antibody detected the TMEM151B protein (arrow).



TMEM151B Antibody (N-term) (Cat. #AP11246a) flow cytometric analysis of K562 cells (right histogram) compared to a negative control cell (left histogram). FITC-conjugated goat-anti-rabbit secondary antibodies were used for the analysis.

Please note: All products are 'FOR RESEARCH USE ONLY. NOT FOR USE IN DIAGNOSTIC OR THERAPEUTIC PROCEDURES'.