

# KRT25 Antibody (C-term)

Affinity Purified Rabbit Polyclonal Antibody (Pab)

Catalog # AP11252b

## Product Information

---

Application	WB, FC, E
Primary Accession	<a href="#">Q7Z3Z0</a>
Other Accession	<a href="#">NP_853512.1</a>
Reactivity	Human
Host	Rabbit
Clonality	Polyclonal
Isotype	Rabbit IgG
Clone Names	RB28791
Calculated MW	49318
Antigen Region	380-408

## Additional Information

---

Gene ID	147183
Other Names	Keratin, type I cytoskeletal 25, Cytokeratin-25, CK-25, Keratin-25, K25, Keratin-25A, K25A, Type I inner root sheath-specific keratin-K25irs1, KRT25 ( <a href="#">HGNC:30839</a> )
Target/Specificity	This KRT25 antibody is generated from rabbits immunized with a KLH conjugated synthetic peptide between 380-408 amino acids from the C-terminal region of human KRT25.
Dilution	WB~~1:1000 FC~~1:10~50 E~~Use at an assay dependent concentration.
Format	Purified polyclonal antibody supplied in PBS with 0.09% (W/V) sodium azide. This antibody is purified through a protein A column, followed by peptide affinity purification.
Storage	Maintain refrigerated at 2-8°C for up to 2 weeks. For long term storage store at -20°C in small aliquots to prevent freeze-thaw cycles.
Precautions	KRT25 Antibody (C-term) is for research use only and not for use in diagnostic or therapeutic procedures.

## Protein Information

---

Name	KRT25 ( <a href="#">HGNC:30839</a> )
Function	Essential for the proper assembly of type I and type II keratin protein complexes and formation of keratin intermediate filaments in the inner root

sheath (irs) (By similarity). Plays a role in the cytoskeleton organization (PubMed:[26902920](#)).

#### Cellular Location

Cytoplasm {ECO:0000250|UniProtKB:Q8VCW2}.

#### Tissue Location

Strongly expressed in skin and scalp, and weak expression observed in thymus and tongue. In the hair follicle, expressed in Henle layer, Huxley layer and in the inner root sheath cuticle of the hair follicle. Expression extends from the bulb region up to the point of differentiation into the three layers. Also present in the medulla of beard hair (at protein level)

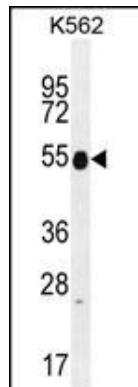
## Background

This gene encodes a member of the type I (acidic) keratin family, which belongs to the superfamily of intermediate filament (IF) proteins. Keratins are heteropolymeric structural proteins which form the intermediate filament. These filaments, along with actin microfilaments and microtubules, compose the cytoskeleton of epithelial cells. The type I keratin genes are clustered in a region of chromosome 17q12-q21.

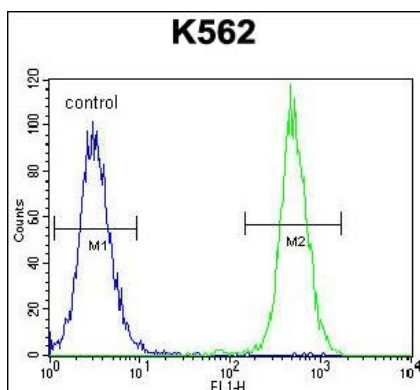
## References

Rose, J. Phd, et al. Mol. Med. (2010) In press :  
Schweizer, J., et al. J. Cell Biol. 174(2):169-174(2006)  
Rogers, M.A., et al. Differentiation 72 (9-10), 527-540 (2004) :  
Hesse, M., et al. Eur. J. Cell Biol. 83(1):19-26(2004)

## Images



KRT25 Antibody (C-term) (Cat. #AP11252b) western blot analysis in K562 cell line lysates (35ug/lane). This demonstrates the KRT25 antibody detected the KRT25 protein (arrow).



KRT25 Antibody (C-term) (Cat. #AP11252b) flow cytometric analysis of K562 cells (right histogram) compared to a negative control cell (left histogram). FITC-conjugated goat-anti-rabbit secondary antibodies were used for the analysis.

Please note: All products are 'FOR RESEARCH USE ONLY. NOT FOR USE IN DIAGNOSTIC OR THERAPEUTIC PROCEDURES'.