

USP50 Antibody (Center)

Affinity Purified Rabbit Polyclonal Antibody (Pab)

Catalog # AP11253c

Product Information

Application	WB, IHC-P, E
Primary Accession	Q70EL3
Other Accession	NP_987090.1
Reactivity	Human
Host	Rabbit
Clonality	Polyclonal
Isotype	Rabbit IgG
Clone Names	RB28792
Calculated MW	38955
Antigen Region	141-169

Additional Information

Gene ID	373509
Other Names	Inactive ubiquitin carboxyl-terminal hydrolase 50, Inactive ubiquitin-specific peptidase 50, USP50
Target/Specificity	This USP50 antibody is generated from rabbits immunized with a KLH conjugated synthetic peptide between 141-169 amino acids from the Central region of human USP50.
Dilution	WB~~1:1000 IHC-P~~1:100~500 E~~Use at an assay dependent concentration.
Format	Purified polyclonal antibody supplied in PBS with 0.09% (W/V) sodium azide. This antibody is purified through a protein A column, followed by peptide affinity purification.
Storage	Maintain refrigerated at 2-8°C for up to 2 weeks. For long term storage store at -20°C in small aliquots to prevent freeze-thaw cycles.
Precautions	USP50 Antibody (Center) is for research use only and not for use in diagnostic or therapeutic procedures.

Protein Information

Name	USP50 (HGNC:20079)
Function	Deubiquitinating enzyme that removes conjugated ubiquitin from specific proteins to regulate different cellular processes. Regulates the inflammasome signaling pathway by deubiquitinating 'Lys- 63'-linked polyubiquitination of

the PYCARD/ASC adapter protein (PubMed:[28094437](#)). Regulates the ubiquitination and stability of the ACE2 protein (PubMed:[36876523](#)). Acts as a negative regulator of the G2/M checkpoint pathway, by preventing serine/threonine kinase WEE1 degradation, thereby repressing entry into mitosis following activation of the G2/M DNA damage checkpoint (PubMed:[20930503](#)).

Cellular Location

Cytoplasm. Cytoplasm, cytoskeleton, microtubule organizing center, centrosome. Nucleus Note=Accumulates in the nucleus following DNA injury

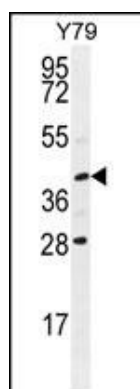
Tissue Location

Weakly expressed in a few tissues.

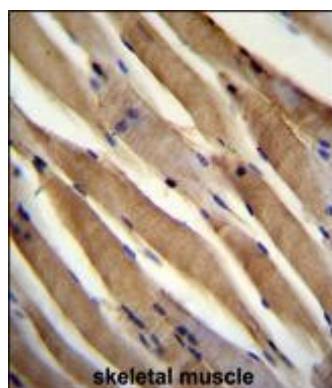
Background

Has no peptidase activity.

Images



USP50 Antibody (Center) (Cat. #AP11253c) western blot analysis in Y79 cell line lysates (35ug/lane). This demonstrates the USP50 antibody detected the USP50 protein (arrow).



USP50 Antibody (Center) (Cat. #AP11253c) immunohistochemistry analysis in formalin fixed and paraffin embedded human skeletal muscle followed by peroxidase conjugation of the secondary antibody and DAB staining. This data demonstrates the use of USP50 Antibody (Center) for immunohistochemistry. Clinical relevance has not been evaluated.

Please note: All products are 'FOR RESEARCH USE ONLY. NOT FOR USE IN DIAGNOSTIC OR THERAPEUTIC PROCEDURES'.