

PRAMEF10 Antibody (C-term)

Affinity Purified Rabbit Polyclonal Antibody (Pab)

Catalog # AP11258b

Product Information

Application	WB, E
Primary Accession	O60809
Other Accession	NP_001034450.2
Reactivity	Human
Host	Rabbit
Clonality	Polyclonal
Isotype	Rabbit IgG
Clone Names	RB28805
Calculated MW	55211
Antigen Region	396-424

Additional Information

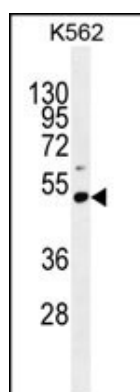
Gene ID	343071
Other Names	PRAME family member 10, PRAMEF10
Target/Specificity	This PRAMEF10 antibody is generated from rabbits immunized with a KLH conjugated synthetic peptide between 396-424 amino acids from the C-terminal region of human PRAMEF10.
Dilution	WB~~1:1000 E~~Use at an assay dependent concentration.
Format	Purified polyclonal antibody supplied in PBS with 0.09% (W/V) sodium azide. This antibody is purified through a protein A column, followed by peptide affinity purification.
Storage	Maintain refrigerated at 2-8°C for up to 2 weeks. For long term storage store at -20°C in small aliquots to prevent freeze-thaw cycles.
Precautions	PRAMEF10 Antibody (C-term) is for research use only and not for use in diagnostic or therapeutic procedures.

Protein Information

Name	PRAMEF10 (HGNC:27997)
------	---

References

Images



PRAMEF10 Antibody (C-term) (Cat. #AP11258b) western blot analysis in K562 cell line lysates (35ug/lane). This demonstrates the PRAMEF10 antibody detected the PRAMEF10 protein (arrow).

Please note: All products are 'FOR RESEARCH USE ONLY. NOT FOR USE IN DIAGNOSTIC OR THERAPEUTIC PROCEDURES'.