

OR2W3 Antibody (C-term)

Affinity Purified Rabbit Polyclonal Antibody (Pab)

Catalog # AP11259b

Product Information

Application	WB, FC, E
Primary Accession	Q7Z3T1
Other Accession	NP_001001957.2
Reactivity	Human
Host	Rabbit
Clonality	Polyclonal
Isotype	Rabbit IgG
Clone Names	RB28808
Calculated MW	34789
Antigen Region	286-314

Additional Information

Gene ID	343171
Other Names	Olfactory receptor 2W3, Olfactory receptor 2W8, Olfactory receptor OR1-49, OR2W3, OR2W3P, OR2W8P
Target/Specificity	This OR2W3 antibody is generated from rabbits immunized with a KLH conjugated synthetic peptide between 286-314 amino acids from the C-terminal region of human OR2W3.
Dilution	WB~~1:1000 FC~~1:10~50 E~~Use at an assay dependent concentration.
Format	Purified polyclonal antibody supplied in PBS with 0.09% (W/V) sodium azide. This antibody is purified through a protein A column, followed by peptide affinity purification.
Storage	Maintain refrigerated at 2-8°C for up to 2 weeks. For long term storage store at -20°C in small aliquots to prevent freeze-thaw cycles.
Precautions	OR2W3 Antibody (C-term) is for research use only and not for use in diagnostic or therapeutic procedures.

Protein Information

Name	OR2W3
Synonyms	OR2W3P, OR2W8P
Function	Odorant receptor.

Cellular Location

Cell membrane; Multi-pass membrane protein.

Background

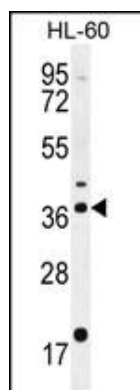
Olfactory receptors interact with odorant molecules in the nose, to initiate a neuronal response that triggers the perception of a smell. The olfactory receptor proteins are members of a large family of G-protein-coupled receptors (GPCR) arising from single coding-exon genes. Olfactory receptors share a 7-transmembrane domain structure with many neurotransmitter and hormone receptors and are responsible for the recognition and G protein-mediated transduction of odorant signals. The olfactory receptor gene family is the largest in the genome. The nomenclature assigned to the olfactory receptor genes and proteins for this organism is independent of other organisms.

References

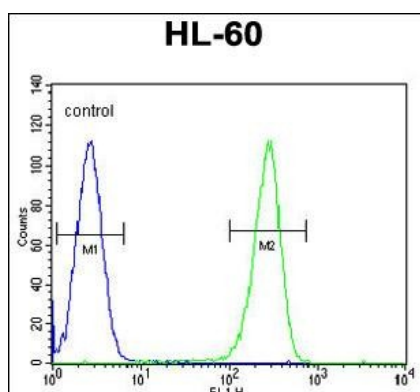
Malnic, B., et al. Proc. Natl. Acad. Sci. U.S.A. 101(8):2584-2589(2004)

Fuchs, T., et al. Genomics 80(3):295-302(2002)

Images



OR2W3 Antibody (C-term) (Cat. #AP11259b) western blot analysis in HL-60 cell line lysates (35ug/lane). This demonstrates the OR2W3 antibody detected the OR2W3 protein (arrow).



OR2W3 Antibody (C-term) (Cat. #AP11259b) flow cytometric analysis of HL-60 cells (right histogram) compared to a negative control cell (left histogram). FITC-conjugated goat-anti-rabbit secondary antibodies were used for the analysis.

Please note: All products are 'FOR RESEARCH USE ONLY. NOT FOR USE IN DIAGNOSTIC OR THERAPEUTIC PROCEDURES'.