

SPATA5L1 Antibody (C-term)

Affinity Purified Rabbit Polyclonal Antibody (Pab)

Catalog # AP11262b

Product Information

Application	WB, E
Primary Accession	Q9BVQ7
Other Accession	NP_076968.1
Reactivity	Human
Host	Rabbit
Clonality	Polyclonal
Isotype	Rabbit IgG
Clone Names	RB28850
Calculated MW	80710
Antigen Region	585-613

Additional Information

Gene ID	79029
Other Names	Spermatogenesis-associated protein 5-like protein 1, SPATA5L1
Target/Specificity	This SPATA5L1 antibody is generated from rabbits immunized with a KLH conjugated synthetic peptide between 585-613 amino acids from the C-terminal region of human SPATA5L1.
Dilution	WB~~1:1000 E~~Use at an assay dependent concentration.
Format	Purified polyclonal antibody supplied in PBS with 0.09% (W/V) sodium azide. This antibody is purified through a protein A column, followed by peptide affinity purification.
Storage	Maintain refrigerated at 2-8°C for up to 2 weeks. For long term storage store at -20°C in small aliquots to prevent freeze-thaw cycles.
Precautions	SPATA5L1 Antibody (C-term) is for research use only and not for use in diagnostic or therapeutic procedures.

Protein Information

Name	AFG2B (HGNC:28762)
Function	ATP-dependent chaperone part of the 55LCC heterohexameric ATPase complex which is chromatin-associated and promotes replisome proteostasis to maintain replication fork progression and genome stability. Required for replication fork progression, sister chromatid cohesion, and chromosome

stability. The ATPase activity is specifically enhanced by replication fork DNA and is coupled to cysteine protease- dependent cleavage of replisome substrates in response to replication fork damage. Uses ATPase activity to process replisome substrates in S- phase, facilitating their proteolytic turnover from chromatin to ensure DNA replication and mitotic fidelity (PubMed:[38554706](#)). Plays an essential role in the cytoplasmic maturation steps of pre-60S ribosomal particles by promoting the release of shuttling protein RSL24D1/RLP24 from the pre-ribosomal particles (PubMed:[35354024](#)).

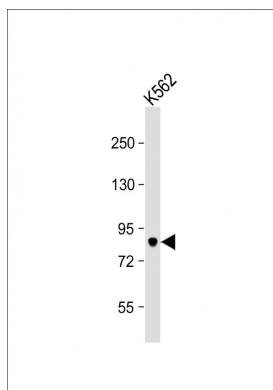
Cellular Location

Cytoplasm. Cytoplasm, cytoskeleton, spindle. Nucleus
{ECO:0000250|UniProtKB:D4A2B7}

Tissue Location

Expressed in both neurons and glia during embryonic and adult stages of brain development.

Images



Anti-SPATA5L1 Antibody (C-term) at 1:1000 dilution + K562 whole cell lysate Lysates/proteins at 20 µg per lane. Secondary Goat Anti-Rabbit IgG, (H+L), Peroxidase conjugated at 1/10000 dilution. Predicted band size : 81 kDa Blocking/Dilution buffer: 5% NFDM/TBST.

Please note: All products are 'FOR RESEARCH USE ONLY. NOT FOR USE IN DIAGNOSTIC OR THERAPEUTIC PROCEDURES'.