

C4orf21 Antibody (N-term)

Affinity Purified Rabbit Polyclonal Antibody (Pab)

Catalog # AP11267a

Product Information

Application	WB, IHC-P, IF, E
Primary Accession	Q86YA3
Other Accession	NP_060862.2
Reactivity	Human, Mouse
Host	Rabbit
Clonality	Polyclonal
Isotype	Rabbit IgG
Clone Names	RB28876
Calculated MW	236602
Antigen Region	38-66

Additional Information

Gene ID	55345
Other Names	Protein ZGRF1, GRF-type zinc finger domain-containing protein 1, ZGRF1, C4orf21
Target/Specificity	This C4orf21 antibody is generated from rabbits immunized with a KLH conjugated synthetic peptide between 38-66 amino acids from the N-terminal region of human C4orf21.
Dilution	WB~~1:1000 IHC-P~~1:100~500 IF~~1:10~50 E~~Use at an assay dependent concentration.
Format	Purified polyclonal antibody supplied in PBS with 0.09% (W/V) sodium azide. This antibody is purified through a protein A column, followed by peptide affinity purification.
Storage	Maintain refrigerated at 2-8°C for up to 2 weeks. For long term storage store at -20°C in small aliquots to prevent freeze-thaw cycles.
Precautions	C4orf21 Antibody (N-term) is for research use only and not for use in diagnostic or therapeutic procedures.

Protein Information

Name	ZGRF1
Synonyms	C4orf21

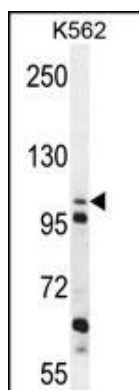
Function

5'-3' DNA helicase which is recruited to sites of DNA damage and promotes repair of replication-blocking DNA lesions through stimulation of homologous recombination (HR) (PubMed:[32640219](#), PubMed:[34552057](#)). Promotes HR by directly stimulating RAD51-mediated strand exchange activity (PubMed:[32640219](#)). Not required to load RAD51 at sites of DNA damage but promotes recombinational repair after RAD51 recruitment (PubMed:[32640219](#)). Also promotes HR by positively regulating EXO1-mediated DNA end resection of double-strand breaks (PubMed:[34552057](#)). Required for recruitment of replication protein RPA2 to DNA damage sites (PubMed:[34552057](#)). Promotes the initiation of the G2/M checkpoint but not its maintenance (PubMed:[34552057](#)). Catalyzes Holliday junction branch migration and dissociation of D-loops and DNA flaps (PubMed:[32640219](#)).

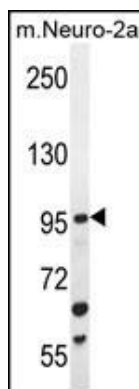
Cellular Location

Nucleus.

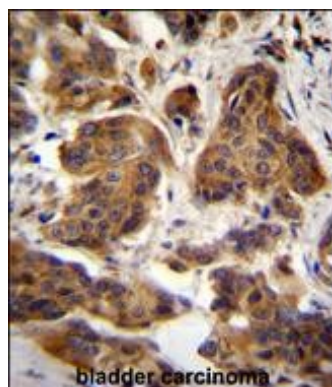
Images



C4orf21 Antibody (N-term) (Cat. #AP11267a) western blot analysis in K562 cell line lysates (35ug/lane). This demonstrates the C4orf21 antibody detected the C4orf21 protein (arrow).

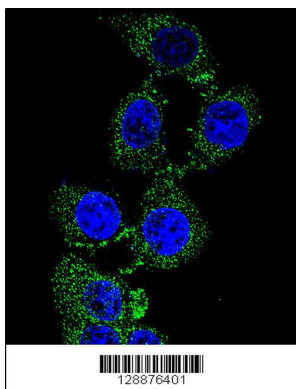


C4orf21 Antibody (N-term) (Cat. #AP11267a) western blot analysis in mouse Neuro-2a cell line lysates (35ug/lane). This demonstrates the C4orf21 antibody detected the C4orf21 protein (arrow).



C4orf21 Antibody (N-term) (Cat. #AP11267a) immunohistochemistry analysis in formalin fixed and paraffin embedded human bladder carcinoma followed by peroxidase conjugation of the secondary antibody and DAB staining. This data demonstrates the use of C4orf21 Antibody (N-term) for immunohistochemistry. Clinical relevance has not been evaluated.

Confocal immunofluorescent analysis of C4orf21



Antibody (N-term)(Cat#AP11267a) with 293 cell followed by Alexa Fluor 488-conjugated goat anti-rabbit IgG (green). DAPI was used to stain the cell nuclear (blue).

Please note: All products are 'FOR RESEARCH USE ONLY. NOT FOR USE IN DIAGNOSTIC OR THERAPEUTIC PROCEDURES'.