

NUDT22 Antibody (C-term)

Affinity Purified Rabbit Polyclonal Antibody (Pab)

Catalog # AP11280b

Product Information

Application	WB, IHC-P, FC, E
Primary Accession	Q9BRQ3
Other Accession	NP_001122084.1
Reactivity	Human
Host	Rabbit
Clonality	Polyclonal
Isotype	Rabbit IgG
Clone Names	RB28926
Calculated MW	32580
Antigen Region	220-249

Additional Information

Gene ID	84304
Other Names	Nucleoside diphosphate-linked moiety X motif 22, Nudix motif 22, NUDT22
Target/Specificity	This NUDT22 antibody is generated from rabbits immunized with a KLH conjugated synthetic peptide between 220-249 amino acids from the C-terminal region of human NUDT22.
Dilution	WB~~1:1000 IHC-P~~1:100~500 FC~~1:10~50 E~~Use at an assay dependent concentration.
Format	Purified polyclonal antibody supplied in PBS with 0.09% (W/V) sodium azide. This antibody is purified through a protein A column, followed by peptide affinity purification.
Storage	Maintain refrigerated at 2-8°C for up to 2 weeks. For long term storage store at -20°C in small aliquots to prevent freeze-thaw cycles.
Precautions	NUDT22 Antibody (C-term) is for research use only and not for use in diagnostic or therapeutic procedures.

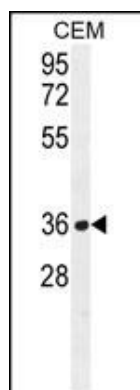
Protein Information

Name	NUDT22
Function	Hydrolyzes UDP-glucose to glucose 1-phosphate and UMP and UDP-galactose to galactose 1-phosphate and UMP. Preferred substrate is UDP-glucose.

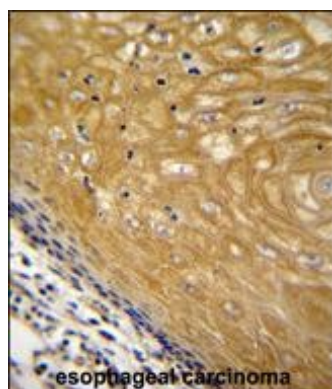
References

Bailey, S.D., et al. Diabetes Care 33(10):2250-2253(2010)
Davila, S., et al. Genes Immun. 11(3):232-238(2010)
Talmud, P.J., et al. Am. J. Hum. Genet. 85(5):628-642(2009)

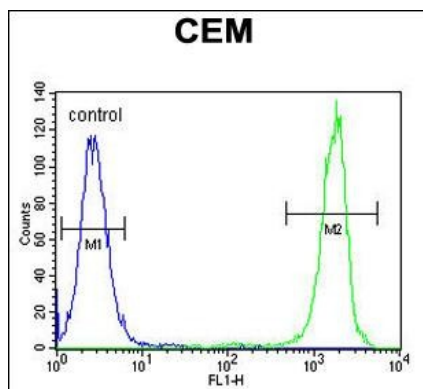
Images



NUDT22 Antibody (C-term) (Cat. #AP11280b) western blot analysis in CEM cell line lysates (35ug/lane). This demonstrates the NUDT22 antibody detected the NUDT22 protein (arrow).



NUDT22 Antibody (C-term) (Cat. #AP11280b) immunohistochemistry analysis in formalin fixed and paraffin embedded human esophageal carcinoma followed by peroxidase conjugation of the secondary antibody and DAB staining. This data demonstrates the use of NUDT22 Antibody (C-term) for immunohistochemistry. Clinical relevance has not been evaluated.



NUDT22 Antibody (C-term) (Cat. #AP11280b) flow cytometric analysis of CEM cells (right histogram) compared to a negative control cell (left histogram). FITC-conjugated goat-anti-rabbit secondary antibodies were used for the analysis.

Please note: All products are 'FOR RESEARCH USE ONLY. NOT FOR USE IN DIAGNOSTIC OR THERAPEUTIC PROCEDURES'.