

ALDH1L2 Antibody (C-term)

Affinity Purified Rabbit Polyclonal Antibody (Pab)

Catalog # AP11288b

Product Information

Application	WB, IHC-P, E
Primary Accession	Q3SY69
Other Accession	Q8K009 , Q6GNL7 , NP_001029345.1
Reactivity	Human, Rat, Mouse
Predicted	Xenopus
Host	Rabbit
Clonality	Polyclonal
Isotype	Rabbit IgG
Clone Names	RB28965
Calculated MW	101746
Antigen Region	743-772

Additional Information

Gene ID	160428
Other Names	Mitochondrial 10-formyltetrahydrofolate dehydrogenase, Mitochondrial 10-FTHFDH, mtFDH, Aldehyde dehydrogenase family 1 member L2, ALDH1L2
Target/Specificity	This ALDH1L2 antibody is generated from rabbits immunized with a KLH conjugated synthetic peptide between 743-772 amino acids from the C-terminal region of human ALDH1L2.
Dilution	WB~~1:1000 IHC-P~~1:100~500 E~~Use at an assay dependent concentration.
Format	Purified polyclonal antibody supplied in PBS with 0.05% (V/V) Proclin 300. This antibody is purified through a protein A column, followed by peptide affinity purification.
Storage	Maintain refrigerated at 2-8°C for up to 2 weeks. For long term storage store at -20°C in small aliquots to prevent freeze-thaw cycles.
Precautions	ALDH1L2 Antibody (C-term) is for research use only and not for use in diagnostic or therapeutic procedures.

Protein Information

Name	ALDH1L2 {ECO:0000303 PubMed:21238436, ECO:0000312 HGNC:HGNC:26777}
Function	Mitochondrial 10-formyltetrahydrofolate dehydrogenase that catalyzes the

NADP(+)-dependent conversion of 10-formyltetrahydrofolate to tetrahydrofolate and carbon dioxide.

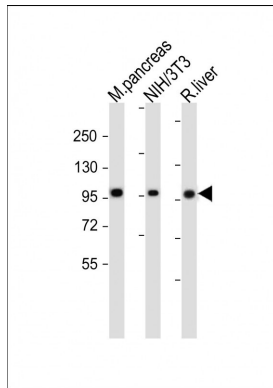
Cellular Location

Mitochondrion.

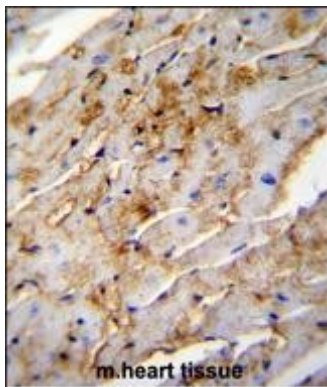
Tissue Location

Highly expressed in pancreas, heart, brain and skeletal muscle.

Images



All lanes : Anti-ALDH1L2 Antibody (C-term) at 1:2000 dilution Lane 1: Mouse pancreas whole cell lysate Lane 2: NIH/3T3 whole cell lysate Lane 3: Rat liver whole lysate Lysates/proteins at 20 µg per lane. Secondary Goat Anti-Rabbit IgG, (H+L), Peroxidase conjugated at 1/10000 dilution. Predicted band size : 102 kDa Blocking/Dilution buffer: 5% NFDM/TBST.



ALDH1L2 Antibody (C-term) (Cat. #AP11288b) immunohistochemistry analysis in formalin fixed and paraffin embedded mouse heart tissue followed by peroxidase conjugation of the secondary antibody and DAB staining. This data demonstrates the use of ALDH1L2 Antibody (C-term) for immunohistochemistry. Clinical relevance has not been evaluated.

Please note: All products are 'FOR RESEARCH USE ONLY. NOT FOR USE IN DIAGNOSTIC OR THERAPEUTIC PROCEDURES'.