

# CLEC4F Antibody (C-term)

Affinity Purified Rabbit Polyclonal Antibody (Pab)

Catalog # AP11289b

## Product Information

---

<b>Application</b>	IHC-P-Leica, WB, E
<b>Primary Accession</b>	<a href="#">Q8N1N0</a>
<b>Other Accession</b>	<a href="#">NP_775806.2</a>
<b>Reactivity</b>	Human
<b>Host</b>	Rabbit
<b>Clonality</b>	Polyclonal
<b>Isotype</b>	Rabbit IgG
<b>Clone Names</b>	RB28979
<b>Calculated MW</b>	65519
<b>Antigen Region</b>	311-339

## Additional Information

---

<b>Gene ID</b>	165530
<b>Other Names</b>	C-type lectin domain family 4 member F, C-type lectin superfamily member 13, C-type lectin 13, CLEC4F, CLECSF13
<b>Target/Specificity</b>	This CLEC4F antibody is generated from rabbits immunized with a KLH conjugated synthetic peptide between 311-339 amino acids from the C-terminal region of human CLEC4F.
<b>Dilution</b>	IHC-P-Leica~~1:250 WB~~1:1000 E~~Use at an assay dependent concentration.
<b>Format</b>	Purified polyclonal antibody supplied in PBS with 0.09% (W/V) sodium azide. This antibody is purified through a protein A column, followed by peptide affinity purification.
<b>Storage</b>	Maintain refrigerated at 2-8°C for up to 2 weeks. For long term storage store at -20°C in small aliquots to prevent freeze-thaw cycles.
<b>Precautions</b>	CLEC4F Antibody (C-term) is for research use only and not for use in diagnostic or therapeutic procedures.

## Protein Information

---

<b>Name</b>	CLEC4F
<b>Synonyms</b>	CLECSF13

**Function** Receptor with an affinity for galactose and fucose. Could be involved in endocytosis (By similarity).

**Cellular Location** Membrane; Single-pass type II membrane protein

## Background

---

Receptor with an affinity for galactose and fucose. Could be involved in endocytosis (By similarity).

## References

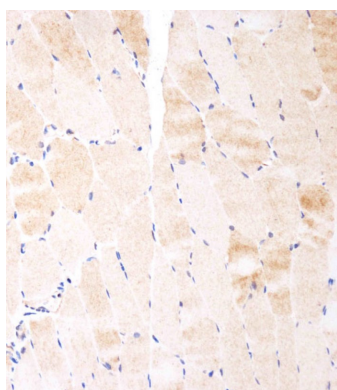
---

Lim, J., et al. Cell 125(4):801-814(2006)

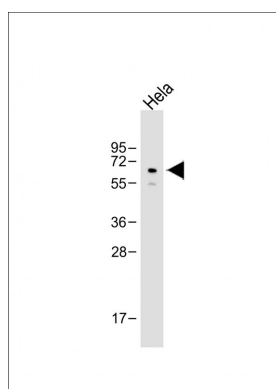
Hoyle, G.W., et al. J. Biol. Chem. 266(3):1850-1857(1991)

## Images

---



Immunohistochemical analysis of AP11289b on paraffin-embedded human skeletal muscle tissue was performed on the Leica® BOND RXm. Tissue was fixed with formaldehyde at room temperature. Heat induced epitope retrieval was performed by EDTA buffer (pH9. 0). Samples were incubated with primary antibody(1:100) for 15min at room temperature. Leica Bond Polymer Refine Detection was used as the secondary antibody.



Anti-CLEC4F Antibody (C-term) at 1:2000 dilution + HeLa whole cell lysate Lysates/proteins at 20 µg per lane. Secondary Goat Anti-Rabbit IgG, (H+L), Peroxidase conjugated at 1/10000 dilution. Predicted band size : 66 kDa Blocking/Dilution buffer: 5% NFDM/TBST.

Please note: All products are 'FOR RESEARCH USE ONLY. NOT FOR USE IN DIAGNOSTIC OR THERAPEUTIC PROCEDURES'.