

PIH1D2 Antibody (C-term)

Affinity Purified Rabbit Polyclonal Antibody (Pab)

Catalog # AP11290b

Product Information

Application	WB, IHC-P, E
Primary Accession	Q8WWB5
Other Accession	NP_620144.1
Reactivity	Mouse
Host	Rabbit
Clonality	Polyclonal
Isotype	Rabbit IgG
Clone Names	RB28987
Calculated MW	35957
Antigen Region	220-249

Additional Information

Gene ID	120379
Other Names	PIH1 domain-containing protein 2, PIH1D2
Target/Specificity	This PIH1D2 antibody is generated from rabbits immunized with a KLH conjugated synthetic peptide between 220-249 amino acids from the C-terminal region of human PIH1D2.
Dilution	WB~~1:1000 IHC-P~~1:100~500 E~~Use at an assay dependent concentration.
Format	Purified polyclonal antibody supplied in PBS with 0.09% (W/V) sodium azide. This antibody is purified through a protein A column, followed by peptide affinity purification.
Storage	Maintain refrigerated at 2-8°C for up to 2 weeks. For long term storage store at -20°C in small aliquots to prevent freeze-thaw cycles.
Precautions	PIH1D2 Antibody (C-term) is for research use only and not for use in diagnostic or therapeutic procedures.

Protein Information

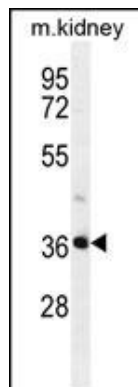
Name	PIH1D2
-------------	--------

References

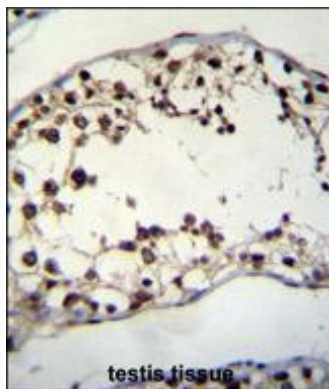
Lamesch, P., et al. Genomics 89(3):307-315(2007)

Wang, A.G., et al. Biochem. Biophys. Res. Commun. 345(3):1022-1032(2006)

Images



PIH1D2 Antibody (C-term) (Cat. #AP11290b) western blot analysis in mouse kidney tissue lysates (35ug/lane). This demonstrates the PIH1D2 antibody detected the PIH1D2 protein (arrow).



PIH1D2 Antibody (C-term) (Cat. #AP11290b) immunohistochemistry analysis in formalin fixed and paraffin embedded human testis tissue followed by peroxidase conjugation of the secondary antibody and DAB staining. This data demonstrates the use of PIH1D2 Antibody (C-term) for immunohistochemistry. Clinical relevance has not been evaluated.

Please note: All products are 'FOR RESEARCH USE ONLY. NOT FOR USE IN DIAGNOSTIC OR THERAPEUTIC PROCEDURES'.