

TSPYL6 Antibody (Center)

Affinity Purified Rabbit Polyclonal Antibody (Pab)

Catalog # AP11292c

Product Information

Application	IHC-P, FC, IF, WB, E
Primary Accession	Q8N831
Other Accession	NP_001003937.2
Reactivity	Human
Host	Rabbit
Clonality	Polyclonal
Isotype	Rabbit IgG
Clone Names	RB28990
Calculated MW	45874
Antigen Region	206-235

Additional Information

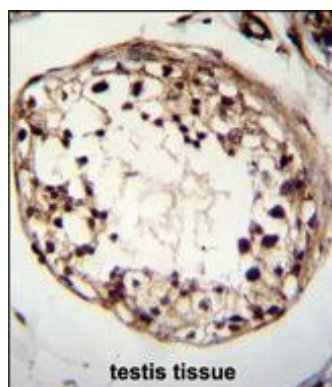
Gene ID	388951
Other Names	Testis-specific Y-encoded-like protein 6, TSPY-like protein 6, TSPYL6
Target/Specificity	This TSPYL6 antibody is generated from rabbits immunized with a KLH conjugated synthetic peptide between 206-235 amino acids from the Central region of human TSPYL6.
Dilution	IHC-P~~1:100~500 FC~~1:10~50 IF~~1:10~50 WB~~1:1000 E~~Use at an assay dependent concentration.
Format	Purified polyclonal antibody supplied in PBS with 0.09% (W/V) sodium azide. This antibody is purified through a protein A column, followed by peptide affinity purification.
Storage	Maintain refrigerated at 2-8°C for up to 2 weeks. For long term storage store at -20°C in small aliquots to prevent freeze-thaw cycles.
Precautions	TSPYL6 Antibody (Center) is for research use only and not for use in diagnostic or therapeutic procedures.

Protein Information

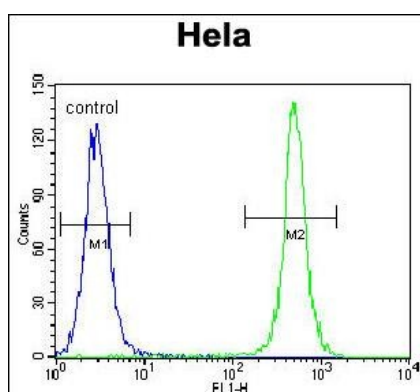
Name	TSPYL6
-------------	--------

References

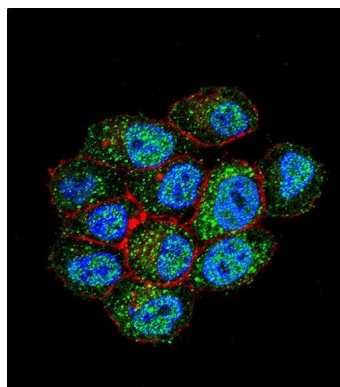
Images



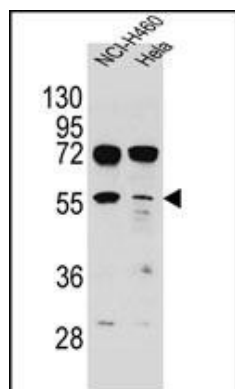
TSPYL6 Antibody (Center) (Cat. #AP11292c) immunohistochemistry analysis in formalin fixed and paraffin embedded human testis tissue followed by peroxidase conjugation of the secondary antibody and DAB staining. This data demonstrates the use of TSPYL6 Antibody (Center) for immunohistochemistry. Clinical relevance has not been evaluated.



TSPYL6 Antibody (Center) (Cat. #AP11292c) flow cytometric analysis of Hela cells (right histogram) compared to a negative control cell (left histogram). FITC-conjugated goat-anti-rabbit secondary antibodies were used for the analysis.



Confocal immunofluorescent analysis of TSPYL6 Antibody (Center) (Cat. #AP11292c) with Hela cell followed by Alexa Fluor 488-conjugated goat anti-rabbit IgG (green). Actin filaments have been labeled with Alexa Fluor 555 phalloidin (red). DAPI was used to stain the cell nuclear (blue).



TSPYL6 Antibody (Center) (Cat. #AP11292c) western blot analysis in NCI-H460, Hela cell line lysates (35ug/lane). This demonstrates the TSPYL6 antibody detected the TSPYL6 protein (arrow).