

PIP5KL1 Antibody (N-term)

Affinity Purified Rabbit Polyclonal Antibody (Pab)

Catalog # AP11297a

Product Information

Application	IHC-P, IF, WB, E
Primary Accession	Q5T9C9
Other Accession	NP_001128691.1
Reactivity	Human
Host	Rabbit
Clonality	Polyclonal
Isotype	Rabbit IgG
Clone Names	RB29011
Calculated MW	44572
Antigen Region	57-86

Additional Information

Gene ID	138429
Other Names	Phosphatidylinositol 4-phosphate 5-kinase-like protein 1, PI(4)P 5-kinase-like protein 1, PtdIns(4)P-5-kinase-like protein 1, PIP5KL1
Target/Specificity	This PIP5KL1 antibody is generated from rabbits immunized with a KLH conjugated synthetic peptide between 57-86 amino acids from the N-terminal region of human PIP5KL1.
Dilution	IHC-P~~1:100~500 IF~~1:10~50 WB~~1:1000 E~~Use at an assay dependent concentration.
Format	Purified polyclonal antibody supplied in PBS with 0.09% (W/V) sodium azide. This antibody is purified through a protein A column, followed by peptide affinity purification.
Storage	Maintain refrigerated at 2-8°C for up to 2 weeks. For long term storage store at -20°C in small aliquots to prevent freeze-thaw cycles.
Precautions	PIP5KL1 Antibody (N-term) is for research use only and not for use in diagnostic or therapeutic procedures.

Protein Information

Name	PIP5KL1
Function	May act as a scaffold to localize and regulate type I PI(4)P 5-kinases to specific compartments within the cell, where they generate PI(4,5)P2 for actin

nucleation, signaling and scaffold protein recruitment and conversion to PI(3,4,5)P3.

Cellular Location

Cytoplasm. Membrane. Note=Localized to large cytoplasmic vesicular structures.

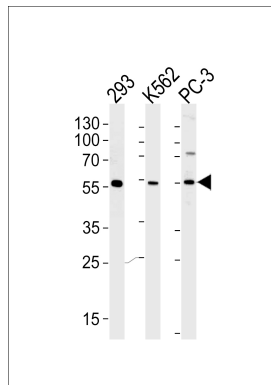
Background

PIP5KL1 is a phosphoinositide kinase-like protein that lacks intrinsic lipid kinase activity but associates with type I PIPKs (see PIP5K1A; MIM 603275) and may play a role in localization of PIPK activity (Chang et al., 2004 [PubMed 14701839]).[supplied by OMIM].

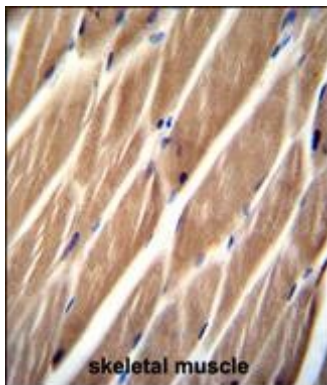
References

Shi, L., et al. Mol. Biol. Rep. 37(5):2189-2198(2010)
Lamesch, P., et al. Genomics 89(3):307-315(2007)
Chang, J.D., et al. J. Biol. Chem. 279(12):11672-11679(2004)

Images

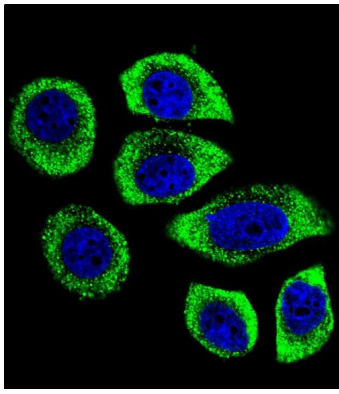


Western blot analysis of lysates from 293, K562, PC-3 cell line (from left to right), using PIP5KL1 Antibody (N-term) (Cat. #AP11297a). AP11297a was diluted at 1:1000 at each lane. A goat anti-rabbit IgG H&L (HRP) at 1:5000 dilution was used as the secondary antibody. Lysates at 35 µg per lane.



PIP5KL1 Antibody (N-term) (Cat. #AP11297a) immunohistochemistry analysis in formalin fixed and paraffin embedded human skeletal muscle followed by peroxidase conjugation of the secondary antibody and DAB staining. This data demonstrates the use of PIP5KL1 Antibody (N-term) for immunohistochemistry. Clinical relevance has not been evaluated.

Confocal immunofluorescent analysis of PIP5KL1 Antibody (N-term) (Cat. #AP11297a) with U-251MG cell followed by Alexa Fluor 488-conjugated goat anti-rabbit IgG (green). DAPI was used to stain the cell nuclear (blue).



Please note: All products are 'FOR RESEARCH USE ONLY. NOT FOR USE IN DIAGNOSTIC OR THERAPEUTIC PROCEDURES'.