

YOD1 Antibody (C-term)

Affinity Purified Rabbit Polyclonal Antibody (Pab)

Catalog # AP11304B

Product Information

Application	WB, IF, IHC-P-Leica, E
Primary Accession	Q5VVQ6
Other Accession	Q567B1 , Q5F3A6 , NP_061036.3
Reactivity	Human
Predicted	Zebrafish, Chicken
Host	Rabbit
Clonality	Polyclonal
Isotype	Rabbit IgG
Clone Names	RB29107
Calculated MW	38322
Antigen Region	319-347

Additional Information

Gene ID	55432
Other Names	Ubiquitin thioesterase OTU1, DUBA-8, HIV-1-induced protease 7, HIN-7, HsHIN7, OTU domain-containing protein 2, YOD1, DUBA8, HIN7, OTUD2
Target/Specificity	This YOD1 antibody is generated from rabbits immunized with a KLH conjugated synthetic peptide between 319-347 amino acids from the C-terminal region of human YOD1.
Dilution	WB~~1:1000 IF~~1:10~50 IHC-P-Leica~~1:500 E~~Use at an assay dependent concentration.
Format	Purified polyclonal antibody supplied in PBS with 0.09% (W/V) sodium azide. This antibody is purified through a protein A column, followed by peptide affinity purification.
Storage	Maintain refrigerated at 2-8°C for up to 2 weeks. For long term storage store at -20°C in small aliquots to prevent freeze-thaw cycles.
Precautions	YOD1 Antibody (C-term) is for research use only and not for use in diagnostic or therapeutic procedures.

Protein Information

Name	YOD1
Synonyms	DUBA8, HIN7, OTUD2

Function	Hydrolase that can remove conjugated ubiquitin from proteins and participates in endoplasmic reticulum-associated degradation (ERAD) for misfolded luminal proteins. May act by trimming the ubiquitin chain on the associated substrate to facilitate their threading through the VCP/p97 pore. Ubiquitin moieties on substrates may present a steric impediment to the threading process when the substrate is transferred to the VCP pore and threaded through VCP's axial channel. Mediates deubiquitination of 'Lys-27', 'Lys-29'- and 'Lys-33'-linked polyubiquitin chains. Also able to hydrolyze 'Lys-11'-linked ubiquitin chains. Cleaves both polyubiquitin and di-ubiquitin. May play a role in macroautophagy, regulating for instance the clearance of damaged lysosomes. May recruit PLAA, UBXN6 and VCP to damaged lysosome membranes decorated with K48-linked ubiquitin chains and remove these chains allowing autophagosome formation (PubMed: 27753622).
Cellular Location	Cytoplasm. Note=Recruited to damaged lysosomes decorated with K48-linked ubiquitin chains.

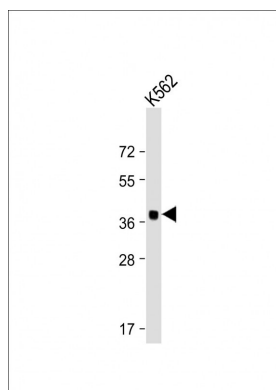
Background

Deubiquitinating enzymes (DUBs; see MIM 603478) are proteases that specifically cleave ubiquitin (MIM 191339) linkages, negating the action of ubiquitin ligases. DUBA8 belongs to a DUB subfamily characterized by an ovarian tumor (OTU) domain.[supplied by OMIM].

References

Ernst, R., et al. Mol. Cell 36(1):28-38(2009)

Images



Anti-YOD1 Antibody (C-term) at 1:2000 dilution + K562 whole cell lysate Lysates/proteins at 20 µg per lane. Secondary Goat Anti-Rabbit IgG, (H+L), Peroxidase conjugated at 1/10000 dilution. Predicted band size : 38 kDa Blocking/Dilution buffer: 5% NFDM/TBST.

Citations

- [A deubiquitinase negatively regulates retro-translocation of nonubiquitinated substrates.](#)

Please note: All products are 'FOR RESEARCH USE ONLY. NOT FOR USE IN DIAGNOSTIC OR THERAPEUTIC PROCEDURES'.