

# MTHFD2L Antibody (C-term)

Affinity Purified Rabbit Polyclonal Antibody (Pab)

Catalog # AP11306b

## Product Information

---

<b>Application</b>	WB, E
<b>Primary Accession</b>	<a href="#">Q9H903</a>
<b>Other Accession</b>	<a href="#">NP_001138450.1</a>
<b>Reactivity</b>	Human, Rat, Mouse
<b>Host</b>	Rabbit
<b>Clonality</b>	Polyclonal
<b>Isotype</b>	Rabbit IgG
<b>Clone Names</b>	RB29117
<b>Calculated MW</b>	37315
<b>Antigen Region</b>	274-302

## Additional Information

---

<b>Gene ID</b>	441024
<b>Other Names</b>	Probable bifunctional methylenetetrahydrofolate dehydrogenase/cyclohydrolase 2, NADP-dependent methylenetetrahydrofolate dehydrogenase 2-like protein, MTHFD2-like, NAD-dependent methylenetetrahydrofolate dehydrogenase, Methenyltetrahydrofolate cyclohydrolase, MTHFD2L
<b>Target/Specificity</b>	This MTHFD2L antibody is generated from rabbits immunized with a KLH conjugated synthetic peptide between 274-302 amino acids from the C-terminal region of human MTHFD2L.
<b>Dilution</b>	WB~~1:1000 E~~Use at an assay dependent concentration.
<b>Format</b>	Purified polyclonal antibody supplied in PBS with 0.09% (W/V) sodium azide. This antibody is purified through a protein A column, followed by peptide affinity purification.
<b>Storage</b>	Maintain refrigerated at 2-8°C for up to 2 weeks. For long term storage store at -20°C in small aliquots to prevent freeze-thaw cycles.
<b>Precautions</b>	MTHFD2L Antibody (C-term) is for research use only and not for use in diagnostic or therapeutic procedures.

## Protein Information

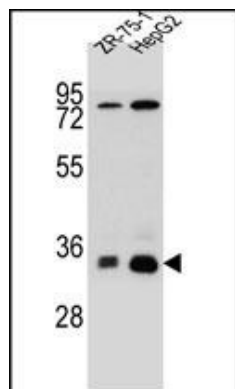
---

<b>Name</b>	MTHFD2L ( <a href="#">HGNC:31865</a> )
-------------	--

<b>Function</b>	Bifunctional mitochondrial folate-interconverting enzyme that has both NAD/NADP-dependent methylenetetrahydrofolate dehydrogenase and methenyltetrahydrofolate cyclohydrolase activities.
<b>Cellular Location</b>	Mitochondrion inner membrane {ECO:0000250   UniProtKB:D3ZUA0}; Peripheral membrane protein {ECO:0000250   UniProtKB:D3ZUA0}; Matrix side {ECO:0000250   UniProtKB:D3ZUA0}
<b>Tissue Location</b>	Isoform 1, isoform 4 and isoform 5 are expressed in brain and placenta.

## Images

---



MTHFD2L Antibody (C-term) (Cat. #AP11306b) western blot analysis in HepG2,ZR-75-1 cell line lysates (35ug/lane).This demonstrates the MTHFD2L antibody detected the MTHFD2L protein (arrow).

Please note: All products are 'FOR RESEARCH USE ONLY. NOT FOR USE IN DIAGNOSTIC OR THERAPEUTIC PROCEDURES'.