

CCNJL Antibody (Center)

Affinity Purified Rabbit Polyclonal Antibody (Pab)

Catalog # AP11307c

Product Information

Application	WB, E
Primary Accession	Q8IV13
Other Accession	NP_078841.3
Reactivity	Human
Host	Rabbit
Clonality	Polyclonal
Isotype	Rabbit IgG
Clone Names	RB29134
Calculated MW	48406
Antigen Region	125-153

Additional Information

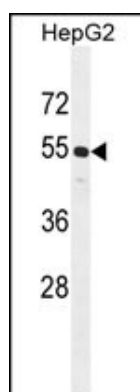
Gene ID	79616
Other Names	Cyclin-J-like protein, CCNJL
Target/Specificity	This CCNJL antibody is generated from rabbits immunized with a KLH conjugated synthetic peptide between 125-153 amino acids from the Central region of human CCNJL.
Dilution	WB~~1:1000 E~~Use at an assay dependent concentration.
Format	Purified polyclonal antibody supplied in PBS with 0.09% (W/V) sodium azide. This antibody is purified through a protein A column, followed by peptide affinity purification.
Storage	Maintain refrigerated at 2-8°C for up to 2 weeks. For long term storage store at -20°C in small aliquots to prevent freeze-thaw cycles.
Precautions	CCNJL Antibody (Center) is for research use only and not for use in diagnostic or therapeutic procedures.

Protein Information

Name	CCNJL
------	-------

References

Images



CCNJL Antibody (Center) (Cat. #AP11307c) western blot analysis in HepG2 cell line lysates (35ug/lane). This demonstrates the CCNJL antibody detected the CCNJL protein (arrow).

Please note: All products are 'FOR RESEARCH USE ONLY. NOT FOR USE IN DIAGNOSTIC OR THERAPEUTIC PROCEDURES'.