

ETV2 Antibody (N-term)

Affinity Purified Rabbit Polyclonal Antibody (Pab)

Catalog # AP11311a

Product Information

Application	WB, E
Primary Accession	O00321
Reactivity	Human
Host	Rabbit
Clonality	Polyclonal
Isotype	Rabbit IgG
Clone Names	RB31137
Calculated MW	36633
Antigen Region	62-90

Additional Information

Gene ID	2116
Other Names	ETS translocation variant 2, Ets-related protein 71, ETV2, ER71, ETSRP71
Target/Specificity	This ETV2 antibody is generated from rabbits immunized with a KLH conjugated synthetic peptide between 62-90 amino acids from the N-terminal region of human ETV2.
Dilution	WB~~1:1000 E~~Use at an assay dependent concentration.
Format	Purified polyclonal antibody supplied in PBS with 0.09% (W/V) sodium azide. This antibody is purified through a protein A column, followed by peptide affinity purification.
Storage	Maintain refrigerated at 2-8°C for up to 2 weeks. For long term storage store at -20°C in small aliquots to prevent freeze-thaw cycles.
Precautions	ETV2 Antibody (N-term) is for research use only and not for use in diagnostic or therapeutic procedures.

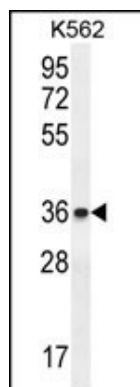
Protein Information

Name	ETV2
Synonyms	ER71, ETSRP71
Function	Binds to DNA sequences containing the consensus pentanucleotide 5'-CGGA[AT]-3'.

Background

Binds to DNA sequences containing the consensus pentanucleotide 5'-CGGA[AT]-3' (By similarity).

Images



ETV2 Antibody (N-term) (Cat. #AP11311a) western blot analysis in K562 cell line lysates (35ug/lane). This demonstrates the ETV2 antibody detected the ETV2 protein (arrow).

Citations

- [ETV2 mediates endothelial transdifferentiation of glioblastoma.](#)

Please note: All products are 'FOR RESEARCH USE ONLY. NOT FOR USE IN DIAGNOSTIC OR THERAPEUTIC PROCEDURES'.