

# ARL8 Antibody (C-term)

Purified Rabbit Polyclonal Antibody (Pab)

Catalog # AP11320b

## Product Information

---

|                          |  |
|--------------------------|--|
| <b>Application</b>       | WB, IHC-P, FC, E                                     |
| <b>Primary Accession</b> | <a href="#">Q96KC2</a>                               |
| <b>Other Accession</b>   | <a href="#">Q9D4P0</a> , <a href="#">NP_848930.1</a> |
| <b>Reactivity</b>        | Human  |
| <b>Predicted</b>         | Mouse  |
| <b>Host</b>              | Rabbit   |
| <b>Clonality</b>         | Polyclonal   |
| <b>Isotype</b>           | Rabbit IgG   |
| <b>Clone Names</b>       | RB14674  |
| <b>Calculated MW</b>     | 20375  |
| <b>Antigen Region</b>    | 122-154  |

## Additional Information

---

|                           |   |
|---------------------------|---|
| <b>Gene ID</b>            | 221079  |
| <b>Other Names</b>        | ADP-ribosylation factor-like protein 5B, ADP-ribosylation factor-like protein 8, ARL5B, ARL8  |
| <b>Target/Specificity</b> | This ARL8 antibody is generated from rabbits immunized with a KLH conjugated synthetic peptide between 122-154 amino acids from the C-terminal region of human ARL8.                      |
| <b>Dilution</b>           | WB~~1:1000 IHC-P~~1:100~500 FC~~1:10~50 E~~Use at an assay dependent concentration.   |
| <b>Format</b>             | Purified polyclonal antibody supplied in PBS with 0.09% (W/V) sodium azide. This antibody is prepared by Saturated Ammonium Sulfate (SAS) precipitation followed by dialysis against PBS. |
| <b>Storage</b>            | Maintain refrigerated at 2-8°C for up to 2 weeks. For long term storage store at -20°C in small aliquots to prevent freeze-thaw cycles.   |
| <b>Precautions</b>        | ARL8 Antibody (C-term) is for research use only and not for use in diagnostic or therapeutic procedures.  |

## Protein Information

---

|                 |       |
|-----------------|-------|
| <b>Name</b>     | ARL5B |
| <b>Synonyms</b> | ARL8  |

## Function

Binds and exchanges GTP and GDP.

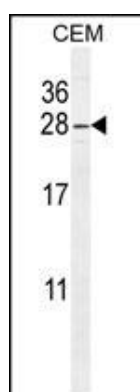
## Background

ARL5B (ARL8) belongs to a family of proteins that are structurally similar to ADP-ribosylation factors (ARFs; see MIM 103180). ARLs and ARFs are part of the RAS superfamily of regulatory GTPases.

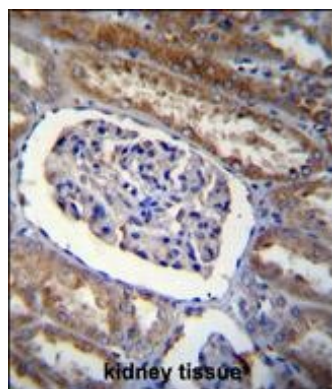
## References

Grupe, A., et al. Am. J. Hum. Genet. 78(1):78-88(2006)  
Barrios-Rodiles, M., et al. Science 307(5715):1621-1625(2005)  
Sebald, E., et al. Gene 311, 147-151 (2003) :

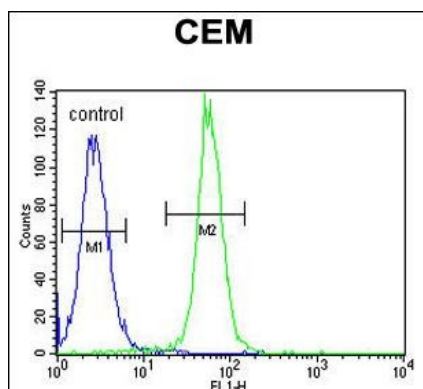
## Images



ARL8 Antibody (C-term) (Cat. #AP11320b) western blot analysis in CEM cell line lysates (35ug/lane). This demonstrates the ARL8 antibody detected the ARL8 protein (arrow).



ARL8 Antibody (C-term) (Cat. #AP11320b) immunohistochemistry analysis in formalin fixed and paraffin embedded human kidney tissue followed by peroxidase conjugation of the secondary antibody and DAB staining. This data demonstrates the use of ARL8 Antibody (C-term) for immunohistochemistry. Clinical relevance has not been evaluated.



ARL8 Antibody (C-term) (Cat. #AP11320b) flow cytometric analysis of CEM cells (right histogram) compared to a negative control cell (left histogram). FITC-conjugated goat-anti-rabbit secondary antibodies were used for the analysis.

Please note: All products are 'FOR RESEARCH USE ONLY. NOT FOR USE IN DIAGNOSTIC OR THERAPEUTIC PROCEDURES'.