

CPA6 Antibody (Center)

Affinity Purified Rabbit Polyclonal Antibody (Pab)

Catalog # AP11327c

Product Information

Application	WB, E
Primary Accession	Q8N4T0
Other Accession	Q5U901 , NP_065094.3
Reactivity	Human
Predicted	Mouse
Host	Rabbit
Clonality	Polyclonal
Isotype	Rabbit IgG
Clone Names	RB19012
Calculated MW	51008
Antigen Region	285-315

Additional Information

Gene ID	57094
Other Names	Carboxypeptidase A6, 3417-, CPA6, CPAH
Target/Specificity	This CPA6 antibody is generated from rabbits immunized with a KLH conjugated synthetic peptide between 285-315 amino acids from the Central region of human CPA6.
Dilution	WB~~1:1000 E~~Use at an assay dependent concentration.
Format	Purified polyclonal antibody supplied in PBS with 0.09% (W/V) sodium azide. This antibody is purified through a protein A column, followed by peptide affinity purification.
Storage	Maintain refrigerated at 2-8°C for up to 2 weeks. For long term storage store at -20°C in small aliquots to prevent freeze-thaw cycles.
Precautions	CPA6 Antibody (Center) is for research use only and not for use in diagnostic or therapeutic procedures.

Protein Information

Name	CPA6
Synonyms	CPAH
Function	May be involved in the proteolytic inactivation of enkephalins and

neurotensin in some brain areas. May convert inactive angiotensin I into the biologically active angiotensin II (PubMed:[18178555](#)). Releases a C-terminal amino acid, with preference for large hydrophobic C-terminal amino acids and shows only very weak activity toward small amino acids and histidine (PubMed:[20855895](#)).

Cellular Location	Secreted, extracellular space, extracellular matrix
Tissue Location	Expressed in the hippocampus, nucleus raphe, and cortex.

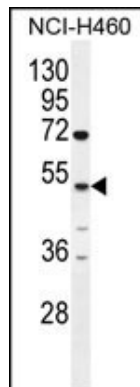
Background

The protein encoded by this gene belongs to the family of carboxypeptidases, which catalyze the release of C-terminal amino acid, and have functions ranging from digestion of food to selective biosynthesis of neuroendocrine peptides. Polymorphic variants and a reciprocal translocation t(6;8)(q26;q13) involving this gene, have been associated with Duane retraction syndrome.

References

Bailey, S.D., et al. Diabetes Care (2010) In press :
Rose, J.E., et al. Mol. Med. 16 (7-8), 247-253 (2010) :
Talmud, P.J., et al. Am. J. Hum. Genet. 85(5):628-642(2009)
Sharif, S.A., et al. Arthritis Rheum. 60(10):2902-2912(2009)
Lyons, P.J., et al. J. Biol. Chem. 283(11):7054-7063(2008)

Images



CPA6 Antibody (Center) (Cat. #AP11327c) western blot analysis in NCI-H460 cell line lysates (35ug/lane). This demonstrates the CPA6 antibody detected the CPA6 protein (arrow).

Please note: All products are 'FOR RESEARCH USE ONLY. NOT FOR USE IN DIAGNOSTIC OR THERAPEUTIC PROCEDURES'.