

## KT33A Antibody (N-term)

Affinity Purified Rabbit Polyclonal Antibody (Pab)

Catalog # AP11333a

### Product Information

---

Application	WB, E
Primary Accession	<a href="#">Q76009</a>
Other Accession	<a href="#">Q14525</a> , <a href="#">Q76011</a> , <a href="#">Q15323</a> , <a href="#">NP_004129.2</a>
Reactivity	Human, Mouse
Predicted	Human
Host	Rabbit
Clonality	Polyclonal
Isotype	Rabbit IgG
Clone Names	RB22295
Calculated MW	45940
Antigen Region	56-85

### Additional Information

---

Gene ID	3883
Other Names	Keratin, type I cuticular Ha3-I, Hair keratin, type I Ha3-I, Keratin-33A, K33A, KRT33A, HHA3-I, HKA3A, KRTHA3A
Target/Specificity	This KT33A antibody is generated from rabbits immunized with a KLH conjugated synthetic peptide between 56-85 amino acids from the N-terminal region of human KT33A.
Dilution	WB~~1:1000 E~~Use at an assay dependent concentration.
Format	Purified polyclonal antibody supplied in PBS with 0.09% (W/V) sodium azide. This antibody is purified through a protein A column, followed by peptide affinity purification.
Storage	Maintain refrigerated at 2-8°C for up to 2 weeks. For long term storage store at -20°C in small aliquots to prevent freeze-thaw cycles.
Precautions	KT33A Antibody (N-term) is for research use only and not for use in diagnostic or therapeutic procedures.

### Protein Information

---

Name	KRT33A
Synonyms	HHA3-I, HKA3A, KRTHA3A

**Tissue Location**

Expressed in the hair follicles.

**Background**

---

The protein encoded by this gene is a member of the keratin gene family. It is one of the type I hair keratin genes which are clustered in a region of chromosome 17q12-q21 and have the same direction of transcription. As a type I hair keratin, it is an acidic protein which heterodimerizes with type II keratins to form hair and nails. There are two isoforms of this protein, encoded by two separate genes, KRT3A and KRT3B. [provided by RefSeq].

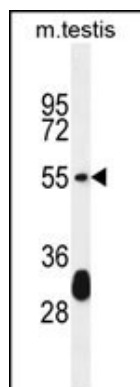
**References**

---

Ewing, R.M., et al. Mol. Syst. Biol. 3, 89 (2007) :  
Schweizer, J., et al. J. Cell Biol. 174(2):169-174(2006)  
Rogers, M.A., et al. Differentiation 72 (9-10), 527-540 (2004) :  
Langbein, L., et al. J. Biol. Chem. 274(28):19874-19884(1999)  
Rogers, M.A., et al. J. Biol. Chem. 273(41):26683-26691(1998)

**Images**

---



KT33A Antibody (N-term) (Cat. #AP11333a) western blot analysis in mouse testis tissue lysates (35ug/lane). This demonstrates the KT33A antibody detected the KT33A protein (arrow).

Please note: All products are 'FOR RESEARCH USE ONLY. NOT FOR USE IN DIAGNOSTIC OR THERAPEUTIC PROCEDURES'.