

RPS6KL1 Antibody

Affinity Purified Rabbit Polyclonal Antibody (Pab)

Catalog # AP11334a

Product Information

Application	WB, E
Primary Accession	Q9Y6S9
Other Accession	NP_113652.1
Reactivity	Human
Host	Rabbit
Clonality	Polyclonal
Isotype	Rabbit IgG
Clone Names	RB22939
Calculated MW	60036

Additional Information

Gene ID	83694
Other Names	Ribosomal protein S6 kinase-like 1, RPS6KL1
Target/Specificity	This RPS6KL1 antibody is generated from rabbits immunized with a recombinant protein of human RPS6KL1.
Dilution	WB~~1:1000 E~~Use at an assay dependent concentration.
Format	Purified polyclonal antibody supplied in PBS with 0.09% (W/V) sodium azide. This antibody is purified through a protein A column, followed by peptide affinity purification.
Storage	Maintain refrigerated at 2-8°C for up to 2 weeks. For long term storage store at -20°C in small aliquots to prevent freeze-thaw cycles.
Precautions	RPS6KL1 Antibody is for research use only and not for use in diagnostic or therapeutic procedures.

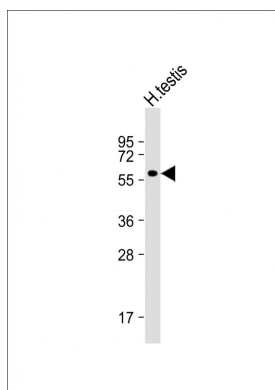
Protein Information

Name	RPS6KL1
------	---------

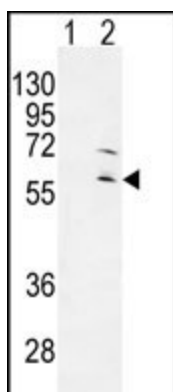
References

Heilig, R., et al. Nature 421(6923):601-607(2003)

Images



Anti-RPS6KL1 Antibody at 1:1000 dilution + H. testis whole cell lysate Lysates/proteins at 20 µg per lane. Secondary Goat Anti-Rabbit IgG, (H+L), Peroxidase conjugated at 1/10000 dilution. Predicted band size : 60 kDa Blocking/Dilution buffer: 5% NFDM/TBST.



Western blot analysis of RPS6KL1 (arrow) using rabbit polyclonal RPS6KL1 Antibody (Cat. #AP11334a). 293 cell lysates (2 ug/lane) either nontransfected (Lane 1) or transiently transfected (Lane 2) with the RPS6KL1 gene.

Please note: All products are 'FOR RESEARCH USE ONLY. NOT FOR USE IN DIAGNOSTIC OR THERAPEUTIC PROCEDURES'.