

MFS10 Antibody (Center)

Affinity Purified Rabbit Polyclonal Antibody (Pab)

Catalog # AP11346c

Product Information

| | |
|--------------------------|--|
| Application | WB, E |
| Primary Accession | Q14728 |
| Other Accession | NP_001111.3 , NP_001139541.1 |
| Reactivity | Human |
| Host | Rabbit |
| Clonality | Polyclonal |
| Isotype | Rabbit IgG |
| Clone Names | RB28971 |
| Calculated MW | 48339 |
| Antigen Region | 245-274 |

Additional Information

| | |
|---------------------------|--|
| Gene ID | 10227 |
| Other Names | Major facilitator superfamily domain-containing protein 10, Tetracycline transporter-like protein, MFSD10, TETRAN |
| Target/Specificity | This MFS10 antibody is generated from rabbits immunized with a KLH conjugated synthetic peptide between 245-274 amino acids from the Central region of human MFS10. |
| Dilution | WB~~1:1000 E~~Use at an assay dependent concentration. |
| Format | Purified polyclonal antibody supplied in PBS with 0.09% (W/V) sodium azide. This antibody is purified through a protein A column, followed by peptide affinity purification. |
| Storage | Maintain refrigerated at 2-8°C for up to 2 weeks. For long term storage store at -20°C in small aliquots to prevent freeze-thaw cycles. |
| Precautions | MFS10 Antibody (Center) is for research use only and not for use in diagnostic or therapeutic procedures. |

Protein Information

| | |
|-----------------|---|
| Name | MFSD10 |
| Synonyms | TETRAN |
| Function | Probable organic anion transporter which may serve as a transporter for |

some non-steroidal anti-inflammatory drugs (NSAIDs) as well as other organic anions across the luminal membranes of renal proximal tubules at the final excretion step into the urine.

Cellular Location

Nucleus inner membrane {ECO:0000250|UniProtKB:Q9D2V8}; Multi-pass membrane protein. Cell membrane; Multi-pass membrane protein

Tissue Location

Expressed in luminal membrane of renal tubules (at protein level) (PubMed:18638446). Detected in all tissues tested with higher expression in heart, spleen, kidney, leukocytes and prostate (PubMed:18638446).

Background

This gene encodes a member of the major facilitator superfamily of transporter proteins. The encoded protein likely functions in efflux of organic anions, including the non-steroidal anti-inflammatory drugs indomethacin and diclofenac. Alternatively spliced transcript variants have been described. [provided by RefSeq].

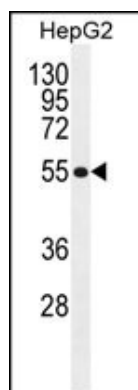
References

Ushijima, H., et al. Biochem. Biophys. Res. Commun. 374(2):325-330(2008)

Mima, S., et al. FEBS Lett. 581(7):1457-1463(2007)

Duyao, M.P., et al. Hum. Mol. Genet. 2(6):673-676(1993)

Images



MFS10 Antibody (Center) (Cat. #AP11346c) western blot analysis in HepG2 cell line lysates (35ug/lane). This demonstrates the MFS10 antibody detected the MFS10 protein (arrow).

Please note: All products are 'FOR RESEARCH USE ONLY. NOT FOR USE IN DIAGNOSTIC OR THERAPEUTIC PROCEDURES'.