

LRTM2 Antibody (C-term)

Affinity Purified Rabbit Polyclonal Antibody (Pab)

Catalog # AP11350b

Product Information

Application	WB, IHC-P, IF, E
Primary Accession	Q8N967
Other Accession	Q8BGX3 , NP_001157397.1
Reactivity	Human, Rat, Mouse
Predicted	Mouse
Host	Rabbit
Clonality	Polyclonal
Isotype	Rabbit IgG
Clone Names	RB29025
Calculated MW	41158
Antigen Region	339-367

Additional Information

Gene ID	654429
Other Names	Leucine-rich repeat and transmembrane domain-containing protein 2, LRTM2
Target/Specificity	This LRTM2 antibody is generated from rabbits immunized with a KLH conjugated synthetic peptide between 339-367 amino acids from the C-terminal region of human LRTM2.
Dilution	WB~~1:1000 IHC-P~~1:100~500 IF~~1:10~50 E~~Use at an assay dependent concentration.
Format	Purified polyclonal antibody supplied in PBS with 0.05% (V/V) Proclin 300. This antibody is prepared by Saturated Ammonium Sulfate (SAS) precipitation followed by dialysis against PBS.
Storage	Maintain refrigerated at 2-8°C for up to 2 weeks. For long term storage store at -20°C in small aliquots to prevent freeze-thaw cycles.
Precautions	LRTM2 Antibody (C-term) is for research use only and not for use in diagnostic or therapeutic procedures.

Protein Information

Name	LRTM2
Cellular Location	Membrane; Single-pass type I membrane protein

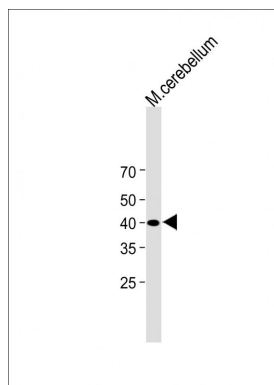
References

Kimura, K., et al. Genome Res. 16(1):55-65(2006)

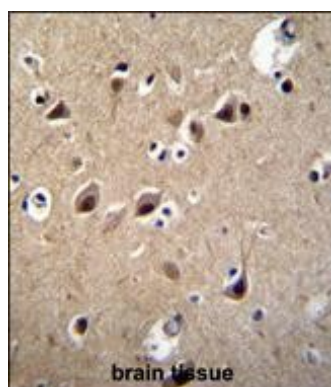
Ota, T., et al. Nat. Genet. 36(1):40-45(2004)

Strausberg, R.L., et al. Proc. Natl. Acad. Sci. U.S.A. 99(26):16899-16903(2002)

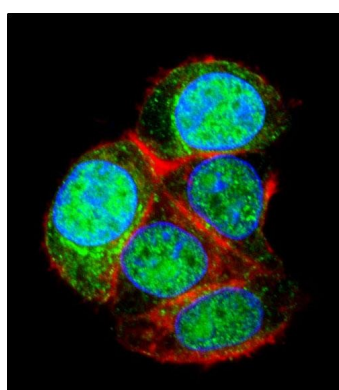
Images



All lanes : Anti-LRTM2 Antibody (C-term) at 1:1000 dilution
Lane 1: mouse cerebellum lysate
Lysates/proteins at 20 µg per lane. Secondary Goat Anti-Rabbit IgG, (H+L), Peroxidase conjugated (ASP1615) at 1/15000 dilution. Observed band size : 40kDa
Blocking/Dilution buffer: 5% NFDM/TBST.



LRTM2 Antibody (C-term) (Cat. #AP11350b) immunohistochemistry analysis in formalin fixed and paraffin embedded human brain tissue followed by peroxidase conjugation of the secondary antibody and DAB staining. This data demonstrates the use of LRTM2 Antibody (C-term) for immunohistochemistry. Clinical relevance has not been evaluated.



Confocal immunofluorescent analysis of LRTM2 Antibody (C-term) (Cat.#AP11350b) with HepG2 cell followed by Alexa Fluor 488-conjugated goat anti-rabbit IgG (green). Actin filaments have been labeled with Alexa Fluor 555 phalloidin (red). DAPI was used to stain the cell nuclear (blue).

Please note: All products are 'FOR RESEARCH USE ONLY. NOT FOR USE IN DIAGNOSTIC OR THERAPEUTIC PROCEDURES'.