

# NIPAL1 Antibody (C-term)

Affinity Purified Rabbit Polyclonal Antibody (Pab)

Catalog # AP11352b

## Product Information

---

<b>Application</b>	WB, FC, E
<b>Primary Accession</b>	<a href="#">Q6NVV3</a>
<b>Other Accession</b>	<a href="#">NP_997213.1</a>
<b>Reactivity</b>	Human, Mouse
<b>Host</b>	Rabbit
<b>Clonality</b>	Polyclonal
<b>Isotype</b>	Rabbit IgG
<b>Clone Names</b>	RB29032
<b>Calculated MW</b>	44638
<b>Antigen Region</b>	381-410

## Additional Information

---

<b>Gene ID</b>	152519
<b>Other Names</b>	Magnesium transporter NIPA3, NIPA-like protein 1, Non-imprinted in Prader-Willi/Angelman syndrome region protein 3, NIPAL1, NIPA3, NPAL1
<b>Target/Specificity</b>	This NIPAL1 antibody is generated from rabbits immunized with a KLH conjugated synthetic peptide between 381-410 amino acids from the C-terminal region of human NIPAL1.
<b>Dilution</b>	WB~~1:1000 FC~~1:10~50 E~~Use at an assay dependent concentration.
<b>Format</b>	Purified polyclonal antibody supplied in PBS with 0.05% (V/V) Proclin 300. This antibody is purified through a protein A column, followed by peptide affinity purification.
<b>Storage</b>	Maintain refrigerated at 2-8°C for up to 2 weeks. For long term storage store at -20°C in small aliquots to prevent freeze-thaw cycles.
<b>Precautions</b>	NIPAL1 Antibody (C-term) is for research use only and not for use in diagnostic or therapeutic procedures.

## Protein Information

---

<b>Name</b>	NIPAL1
<b>Synonyms</b>	NIPA3, NPAL1
<b>Function</b>	Acts as a Mg(2+) transporter. Can also transport other divalent cations such

as Fe(2+), Sr(2+), Ba(2+), Mn(2+), Cu(2+) and Co(2+) but to a much less extent than Mg(2+) (By similarity).

**Cellular Location**

Golgi apparatus membrane {ECO:0000250 | UniProtKB:Q8BMW7}; Multi-pass membrane protein

**Tissue Location**

Expressed in the pancreatic islets.

## Background

---

Acts as a Mg(2+) transporter. Can also transport other divalent cations such as Fe(2+), Sr(2+), Ba(2+), Mn(2+), Cu(2+) and Co(2+) but to a much less extent than Mg(2+) (By similarity).

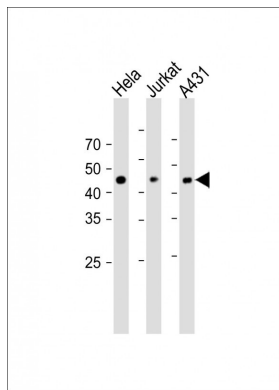
## References

---

Gerhard, D.S., et al. Genome Res. 14 (10B), 2121-2127 (2004) :

## Images

---



All lanes: Anti-NIPAL1 Antibody (C-term) at 1:1000 dilution  
Lane 1: HeLa whole cell lysate  
Lane 2: Jurkat whole cell lysate  
Lane 3: A431 whole cell lysate  
Lysates/proteins at 20 µg per lane. Secondary: Goat Anti-Rabbit IgG, (H+L), Peroxidase conjugated (ASP1615) at 1/15000 dilution. Observed band size: 45 kDa  
Blocking/Dilution buffer: 5% NFDm/TBST.

Please note: All products are 'FOR RESEARCH USE ONLY. NOT FOR USE IN DIAGNOSTIC OR THERAPEUTIC PROCEDURES'.