

LRRC45 Antibody (C-term)

Affinity Purified Rabbit Polyclonal Antibody (Pab)

Catalog # AP11368b

Product Information

Application	WB, IHC-P, IF, FC, E
Primary Accession	Q96CN5
Other Accession	NP_659436.1
Reactivity	Human, Mouse
Host	Rabbit
Clonality	Polyclonal
Isotype	Rabbit IgG
Clone Names	RB29103
Calculated MW	75951
Antigen Region	615-643

Additional Information

Gene ID	201255
Other Names	Leucine-rich repeat-containing protein 45, LRRC45
Target/Specificity	This LRRC45 antibody is generated from rabbits immunized with a KLH conjugated synthetic peptide between 615-643 amino acids from the C-terminal region of human LRRC45.
Dilution	WB~~1:1000 IHC-P~~1:100~500 IF~~1:10~50 FC~~1:10~50 E~~Use at an assay dependent concentration.
Format	Purified polyclonal antibody supplied in PBS with 0.09% (W/V) sodium azide. This antibody is purified through a protein A column, followed by peptide affinity purification.
Storage	Maintain refrigerated at 2-8°C for up to 2 weeks. For long term storage store at -20°C in small aliquots to prevent freeze-thaw cycles.
Precautions	LRRC45 Antibody (C-term) is for research use only and not for use in diagnostic or therapeutic procedures.

Protein Information

Name	LRRC45
Function	Component of the proteinaceous fiber-like linker between two centrioles, required for centrosome cohesion.

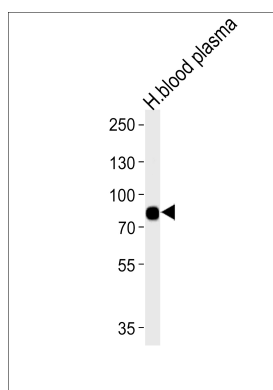
Cellular Location

Cytoplasm, cytoskeleton, microtubule organizing center, centrosome.
Note=Localizes to the proteinaceous linker between the proximal ends of the centrioles

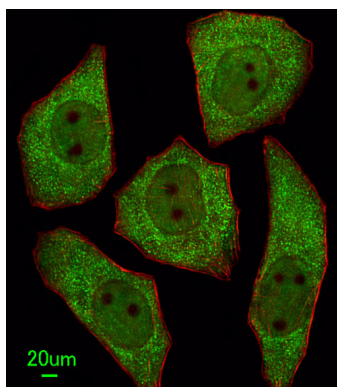
References

Olsen, J.V., et al. Cell 127(3):635-648(2006) Gerhard, D.S., et al. Genome Res. 14 (10B), 2121-2127 (2004) :

Images



Western blot analysis of lysates from human blood plasma tissue (from left to right), using LRRC45 Antibody (C-term) (Cat. #AP11368b). AP11368b was diluted at 1:1000 at each lane. A goat anti-rabbit IgG H&L(HRP) at 1:5000 dilution was used as the secondary antibody. Lysates at 35ug per lane.



Immunofluorescent analysis of U251 cells, using LRRC45 Antibody (C-term) (Cat. #AP11368b). AP11368b was diluted at 1:25 dilution. Alexa Fluor 488-conjugated goat anti-rabbit IgG at 1:400 dilution was used as the secondary antibody (green). Cytoplasmic actin was counterstained with Dylight Fluor® 554 (red) conjugated Phalloidin (red).

Please note: All products are 'FOR RESEARCH USE ONLY. NOT FOR USE IN DIAGNOSTIC OR THERAPEUTIC PROCEDURES'.