

METTL10 Antibody (N-term)

Affinity Purified Rabbit Polyclonal Antibody (Pab)

Catalog # AP11370a

Product Information

Application	WB, IHC-P, FC, E
Primary Accession	Q5JPI9
Other Accession	NP_997719.2
Reactivity	Human
Host	Rabbit
Clonality	Polyclonal
Isotype	Rabbit IgG
Clone Names	RB29106
Calculated MW	25904
Antigen Region	29-57

Additional Information

Gene ID	399818
Other Names	Methyltransferase-like protein 10, 211-, METTL10, C10orf138
Target/Specificity	This METTL10 antibody is generated from rabbits immunized with a KLH conjugated synthetic peptide between 29-57 amino acids from the N-terminal region of human METTL10.
Dilution	WB~~1:1000 IHC-P~~1:100~500 FC~~1:10~50 E~~Use at an assay dependent concentration.
Format	Purified polyclonal antibody supplied in PBS with 0.05% (V/V) Proclin 300. This antibody is purified through a protein A column, followed by peptide affinity purification.
Storage	Maintain refrigerated at 2-8°C for up to 2 weeks. For long term storage store at -20°C in small aliquots to prevent freeze-thaw cycles.
Precautions	METTL10 Antibody (N-term) is for research use only and not for use in diagnostic or therapeutic procedures.

Protein Information

Name	EFMT2
Function	[Isoform 2]: Protein-lysine methyltransferase that selectively catalyzes the trimethylation of EE1A at 'Lys-318'.

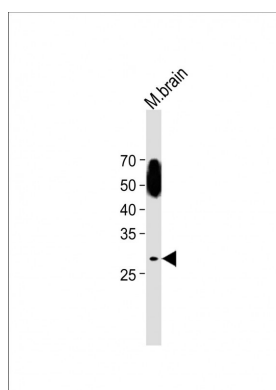
Cellular Location

Cytoplasm {ECO:0000255 | HAMAP-Rule:MF_03188, ECO:0000269 | PubMed:25144183}. Nucleus {ECO:0000255 | HAMAP-Rule:MF_03188, ECO:0000269 | PubMed:25144183}

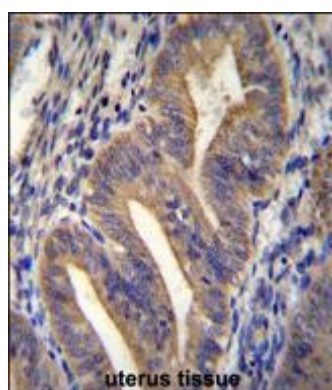
References

Grupe, A., et al. Am. J. Hum. Genet. 78(1):78-88(2006)

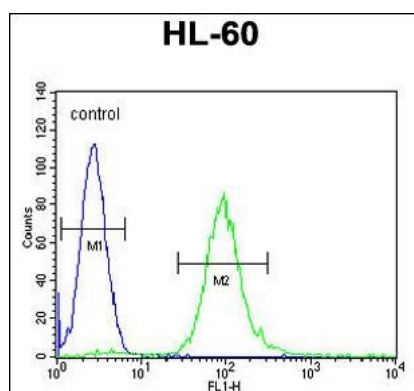
Images



All lanes: Anti-METTL10 Antibody (N-term) at 1:500 dilution + Mouse Brain lysate Lysates/proteins at 20 µg per lane. Secondary: Goat Anti-Rabbit IgG, (H+L), Peroxidase conjugated (ASP1615) at 1/15000 dilution. Observed band size: 28 KDa Blocking/Dilution buffer: 5% NFDm/TBST.



METTL10 Antibody (N-term) (Cat. #AP11370a) immunohistochemistry analysis in formalin fixed and paraffin embedded human uterus tissue followed by peroxidase conjugation of the secondary antibody and DAB staining. This data demonstrates the use of METTL10 Antibody (N-term) for immunohistochemistry. Clinical relevance has not been evaluated.



METTL10 Antibody (N-term) (Cat. #AP11370a) flow cytometric analysis of HL-60 cells (right histogram) compared to a negative control cell (left histogram). FITC-conjugated goat-anti-rabbit secondary antibodies were used for the analysis.

Please note: All products are 'FOR RESEARCH USE ONLY. NOT FOR USE IN DIAGNOSTIC OR THERAPEUTIC PROCEDURES'.