

SLC35F3 Antibody (Center)

Affinity Purified Rabbit Polyclonal Antibody (Pab)

Catalog # AP11376c

Product Information

Application	WB, IHC-P, E
Primary Accession	Q8IY50
Other Accession	NP_775779.1
Reactivity	Human, Rat, Mouse
Host	Rabbit
Clonality	Polyclonal
Isotype	Rabbit IgG
Clone Names	RB29129
Calculated MW	46817
Antigen Region	107-135

Additional Information

Gene ID	148641
Other Names	Putative thiamine transporter SLC35F3, Solute carrier family 35 member F3, SLC35F3
Target/Specificity	This SLC35F3 antibody is generated from rabbits immunized with a KLH conjugated synthetic peptide between 107-135 amino acids from the Central region of human SLC35F3.
Dilution	WB~~1:1000 IHC-P~~1:100~500 E~~Use at an assay dependent concentration.
Format	Purified polyclonal antibody supplied in PBS with 0.05% (V/V) Proclin 300. This antibody is prepared by Saturated Ammonium Sulfate (SAS) precipitation followed by dialysis against PBS.
Storage	Maintain refrigerated at 2-8°C for up to 2 weeks. For long term storage store at -20°C in small aliquots to prevent freeze-thaw cycles.
Precautions	SLC35F3 Antibody (Center) is for research use only and not for use in diagnostic or therapeutic procedures.

Protein Information

Name	SLC35F3 (HGNC:23616)
Function	Mediates thiamine transport.
Cellular Location	Membrane; Multi-pass membrane protein

Tissue Location

Expressed at the highest levels in the adult cerebellum.

Background

Putative solute transporter (Potential).

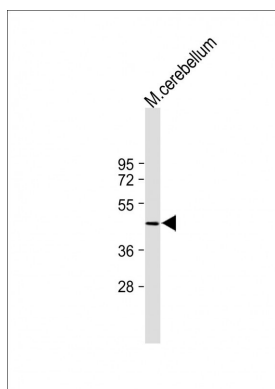
References

Bailey, S.D., et al. Diabetes Care 33(10):2250-2253(2010)

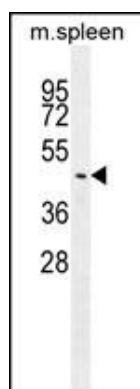
Rose, J.E., et al. Mol. Med. 16 (7-8), 247-253 (2010) :

Talmud, P.J., et al. Am. J. Hum. Genet. 85(5):628-642(2009)

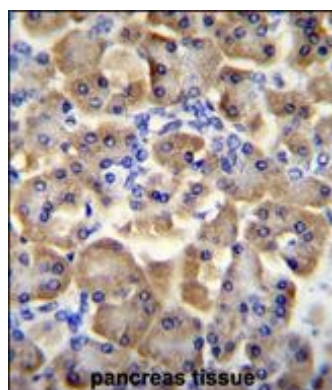
Images



All lanes : Anti-SLC35F3 Antibody (Center) at 1:2000 dilution Lane 1: mouse cerebellum tissue lysate Lysates/proteins at 20 µg per lane. Secondary Goat Anti-Rabbit IgG, (H+L), Peroxidase conjugated (ASP1615) at 1/15000 dilution. Observed band size : 47kDa Blocking/Dilution buffer: 5% NFDm/TBST.



SLC35F3 Antibody (Center) (Cat. #AP11376c) western blot analysis in mouse spleen tissue lysates (35ug/lane).This demonstrates the SLC35F3 antibody detected the SLC35F3 protein (arrow).



SLC35F3 Antibody (Center) (Cat. #AP11376c)immunohistochemistry analysis in formalin fixed and paraffin embedded human pancreas tissue followed by peroxidase conjugation of the secondary antibody and DAB staining.This data demonstrates the use of SLC35F3 Antibody (Center) for immunohistochemistry. Clinical relevance has not been evaluated.

Please note: All products are 'FOR RESEARCH USE ONLY. NOT FOR USE IN DIAGNOSTIC OR THERAPEUTIC PROCEDURES'.