

FAM133A Antibody (N-term)

Affinity Purified Rabbit Polyclonal Antibody (Pab)

Catalog # AP11383a

Product Information

Application	WB, FC, E
Primary Accession	Q8N9E0
Other Accession	NP_001164582.1 , NP_775969.1 , NP_001164580.1
Reactivity	Human
Host	Rabbit
Clonality	Polyclonal
Isotype	Rabbit IgG
Clone Names	RB29195
Calculated MW	28941
Antigen Region	29-57

Additional Information

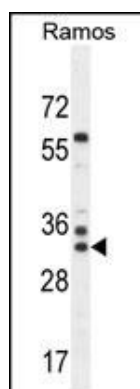
Gene ID	286499
Other Names	Protein FAM133A, FAM133A
Target/Specificity	This FAM133A antibody is generated from rabbits immunized with a KLH conjugated synthetic peptide between 29-57 amino acids from the N-terminal region of human FAM133A.
Dilution	WB~~1:1000 FC~~1:10~50 E~~Use at an assay dependent concentration.
Format	Purified polyclonal antibody supplied in PBS with 0.09% (W/V) sodium azide. This antibody is purified through a protein A column, followed by peptide affinity purification.
Storage	Maintain refrigerated at 2-8°C for up to 2 weeks. For long term storage store at -20°C in small aliquots to prevent freeze-thaw cycles.
Precautions	FAM133A Antibody (N-term) is for research use only and not for use in diagnostic or therapeutic procedures.

Protein Information

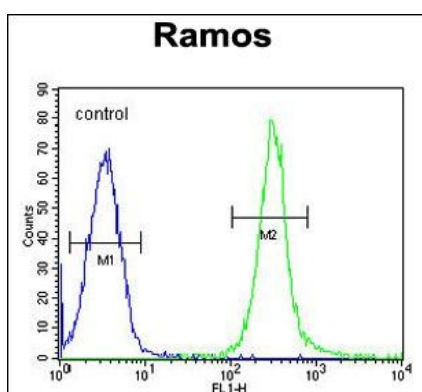
Name	FAM133A
------	---------

References

Images



FAM133A Antibody (N-term) (Cat. #AP11383a) western blot analysis in Ramos cell line lysates (35ug/lane). This demonstrates the FAM133A antibody detected the FAM133A protein (arrow).



FAM133A Antibody (N-term) (Cat. #AP11383a) flow cytometric analysis of Ramos cells (right histogram) compared to a negative control cell (left histogram). FITC-conjugated goat-anti-rabbit secondary antibodies were used for the analysis.

Please note: All products are 'FOR RESEARCH USE ONLY. NOT FOR USE IN DIAGNOSTIC OR THERAPEUTIC PROCEDURES'.